



PARTS CATALOG

Published

2008/7 (Jul.)

0CNP2-G99200

CONTENTS

MODEL : YL630T(S)
PC NO : 0CNP2-G99200

Fig.No. GROUP NAME

ENGINE RELATION SECT

1. ENGINE RELATED & CLUTCH

DRIVE SECTION

2. INPUT
3. GEAR CASE

WHEEL SECTION

4. WHEEL
5. AXLE

REAPING SECTION

6. BLADE, FAN & CATCHER

HANDLE SECTION

7. HANDLE
8. LEVER WIRE

FRAME SECTION

9. CASING & COVER
10. SCRAPER & GUARD

LABELS, TOOL & ACCESS

11. LABELS
12. TOOLS

Fig.No. GROUP NAME



PARTS CATALOG

Published

2008/7 (Jul.)

0CNP3-G02200

CONTENTS

MODEL : FC180V(N2992

PC NO : 0CNP3-G02200

Fig.No. GROUP NAME

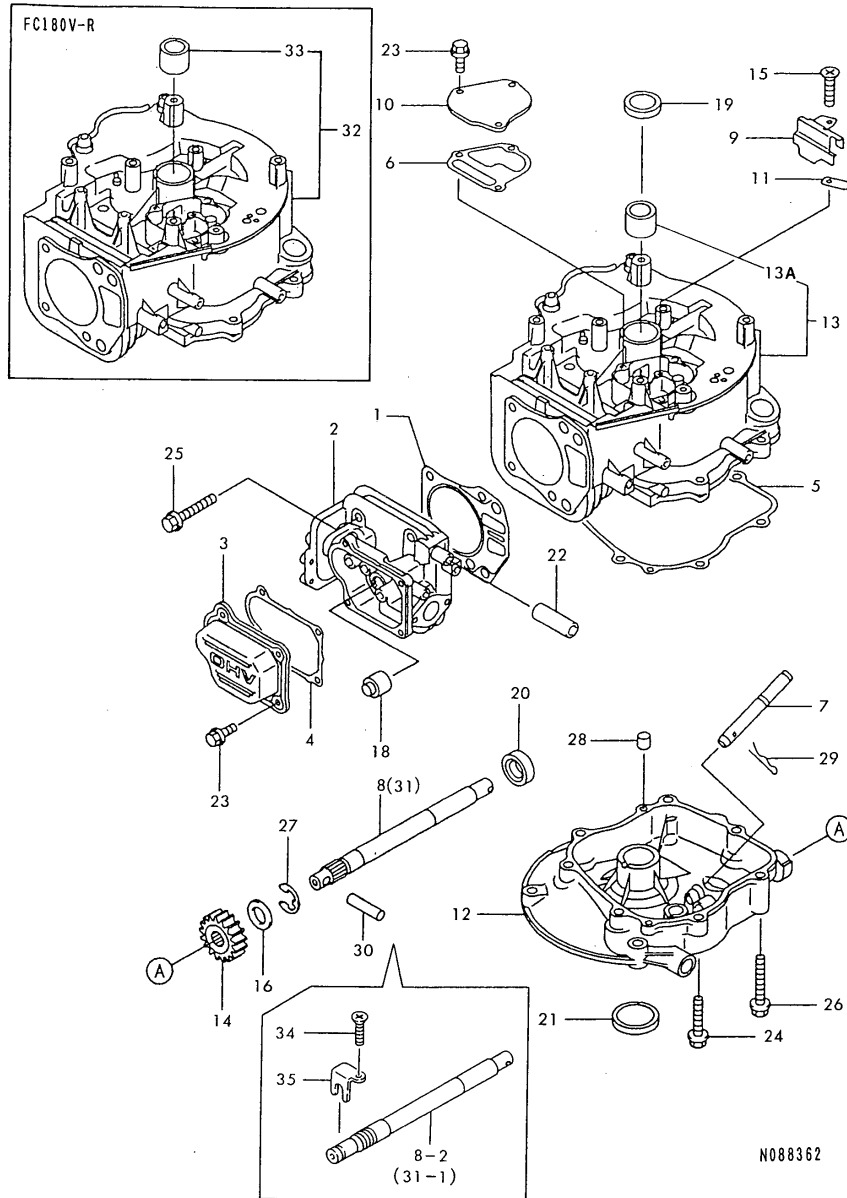
Engine Unit (FC180V)

1. CYLINDER & CRANKCASE
2. PISTON & CRANKSHAFT
3. VALVES & CAMSHAFT
4. LUBRICATING SYSTEM
5. COOLING DEVICE
6. ELECTRICAL PARTS
7. CONTROLLING DEVICE
8. CARBURETOR
9. AIR FILTER & MUFFLER
10. FUEL TANK & FUEL VALVE
11. STARTER
12. LABELS & ACCESSORIES
13. BRAKE(ADDITIONAL FIG.

Fig.No. GROUP NAME

Fig.1. CYLINDER & CRANKCASE

1. CYLINDER & CRANKCASE



Remarks
 * 7Z1071-11020 ENGINE ASSY.(FC180V
 * 7Z1071-11030 ENGINE ASSY.(FC180V-R

OCNP3-G02200 1. CYLINDER & CRANKCASE

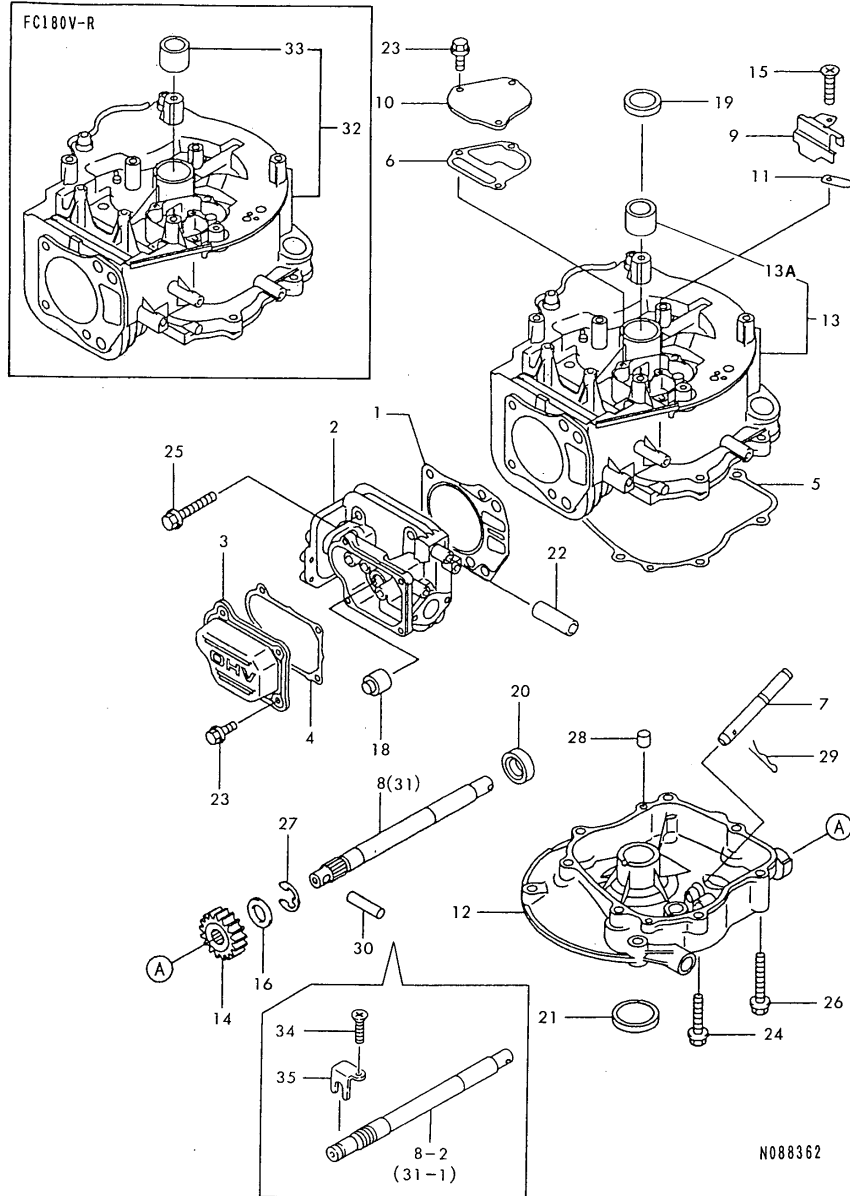
(A)=FC180V
 (B)=FC180V-R
 (C)=

(D)=
 (E)=
 (F)=

REF.	LEV.	PARTS NO.	DESCRIPTION	QTY						I	R
				(A)	(B)	(C)	(D)	(E)	(F)		
1	1	1Z1100-42117	GASKET-HEAD	1	1						
2	1	1Z1100-82097	HEAD-COMP-CYLINDER	1	1						
2-1	1	1Z1100-82117	HEAD-COMP-CYLINDER	1	1						R
2-2	1	1Z1100-82118	HEAD-COMP-CYLINDER	1	1						N
		(A=E021663) (B=E021663)									
3	1	1Z1102-22067	CASE-ROCKER	1	1						
4	1	1Z1106-02139	GASKET,ROCKER CASE	1	1						
5	1	1Z1106-02142	GASKET	1	1						
6	1	1Z1106-02143	GASKET	1	1						
7	1	1Z1310-72255	SHAFT	1	1						
8	1	1Z1310-72256	SHAFT	1							
8-1	1	1Z1310-72269	SHAFT	1							N
		(A=E012119)									
8-2	1	1Z1310-72272	SHAFT	1							S
		(A=E017768)									
9	1	1Z1318-32504	PLATE	1	1						
10	1	1Z1409-02032	COVER	1	1						
10-1	1	1Z1409-02094	COVER	1	1						N
		(A=E019268) (B=E019268)									
11	1	1Z1612-62146	VALVE	1	1						
12	1	1Z4901-52291	COVER-CRANKCASE	1	1						
12-1	1	1Z4901-52338	COVER-CRANKCASE	1	1						S
		(A=E017768) (B=E017768)									
13	1	1Z4912-06074	CRANKCASE-COMP	1							
13-1	1	1Z4912-06112	CASE, CRANK	1							S
		(A=E016381)									
13-2	1	1Z4912-06103	CRANKCASE-COMP	1							R
		(A=E016381)									
13A	2	1Z9202-82017	BUSHING	1							
14	1	1Z5905-62790	GEAR-HELICAL	1	1						
15	1	1Z9200-92166	SCREW	1	1						
16	1	1Z9202-21236	WASHER,12.2X20X1.6	1	1						
16-1	1	1Z9220-02082	WASHER,12.3X20X0.5	1	1						S
		(A=E017768) (B=E017768)									
16-2	1	1Z9202-22690	SPACER	1	1						R
		(A=E017768) (B=E017768)									
18	1	1Z9204-91062	SEAL-OIL	1	1						Z
		(A=E016381) (B=E021291)									
19	1	1Z9204-92199	SEAL-OIL	1	1						
20	1	1Z9204-92204	SEAL, OIL	1	1						
21	1	1Z9204-92210	SEAL-OIL	1	1						
22	1	1Z9219-02112	TUBE,12X16X46	1	1						
23	1	26106-060122	BOLT M 6X 12 PLATED	7	7						
24	1	1Z130G-08350	BOLT 8X35	4	4						
25	1	1Z130G-08450	BOLT-FLANGED	4	4						
26	1	26106-080502	BOLT M 8X 50 PLATED	3	3						
27	1	1Z482J-90000	CIRCLIP-TYPE-E	1	1						Z
		(A=E017768) (B=E017768)									
28	1	1Z0056-06120	PIN,DOWEL	2	2						
29	1	22372-060000	SNAP PIN 6	1	1						

Fig.1. CYLINDER & CRANKCASE

1. CYLINDER & CRANKCASE



0CNP3-G02200 1. CYLINDER & CRANKCASE

(A)=FC180V
(B)=FC180V-R
(C)=

(D)=
(E)=
(F)=

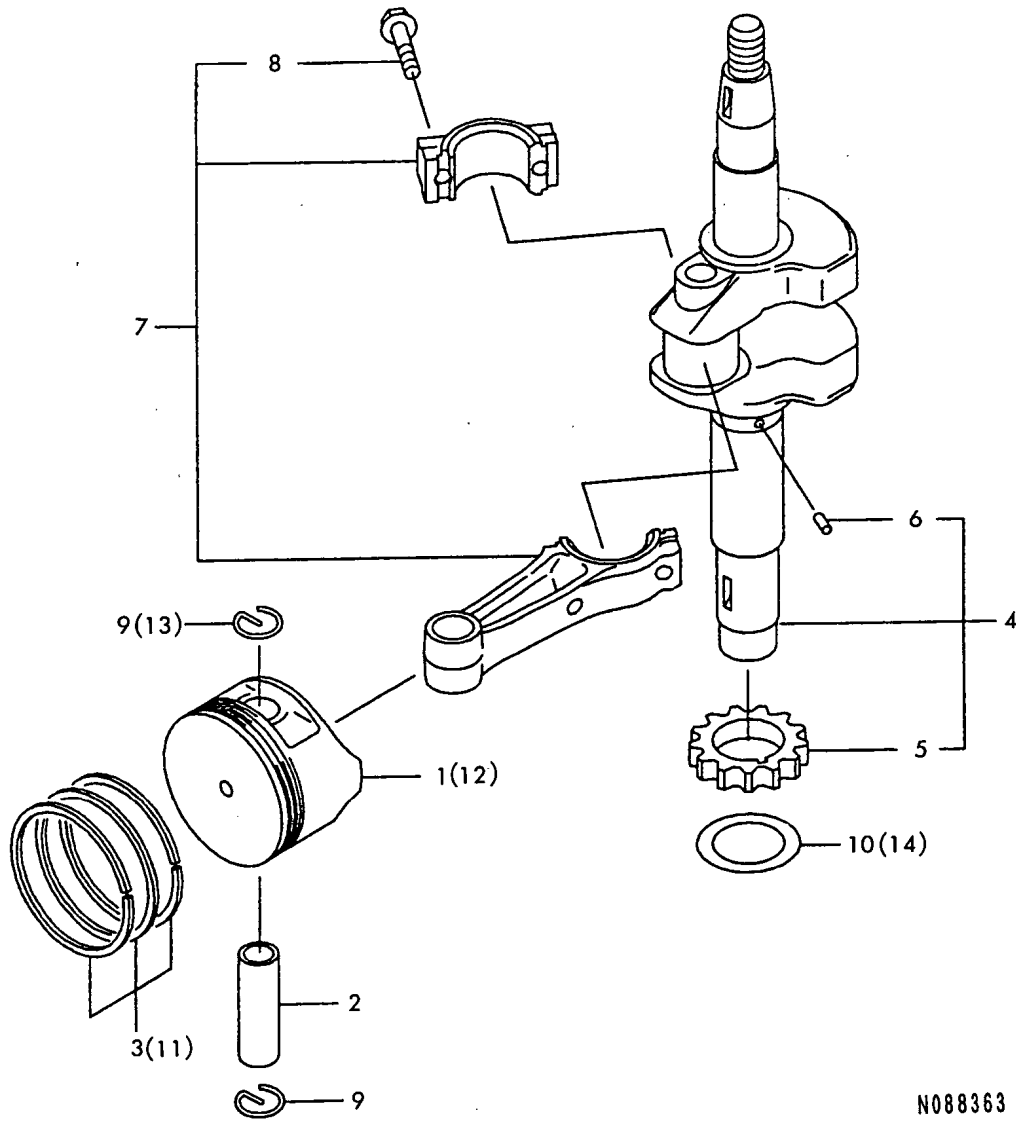
REF.	LEV.	PARTS NO.	DESCRIPTION	QTY						I	R
				(A)	(B)	(C)	(D)	(E)	(F)		
30	1	1Z555A-05160 (A=E017768) (B=E017768)	PIN-SPRING	1	1						Z
31	1	1Z1310-72269	SHAFT		1						S
31-1	1	1Z1310-72272 (B=E017768)	SHAFT		1						S
32	1	1Z4912-06112	CASE, CRANK		1						R
32-1	1	1Z4912-06103 (B=EXXXXXX)	CRANKCASE-COMP		1						R
33	2	1Z9202-82017	BUSHING		1						
34	1	1Z9200-92308 (A=E017768) (B=E017768)	SCREW	1	1						W
35	1	1Z1104-92019 (A=E017768) (B=E017768)	BRACKET	1	1						W

Remarks

* 7Z1071-11020 ENGINE ASSY.(FC180V)
* 7Z1071-11030 ENGINE ASSY.(FC180V-R)

Fig.2. PISTON & CRANKSHAFT

2. PISTON & CRANKSHAFT



N088363

OCNP3-G02200 2. PISTON & CRANKSHAFT

(A)=FC180V
(B)=FC180V-R
(C)=

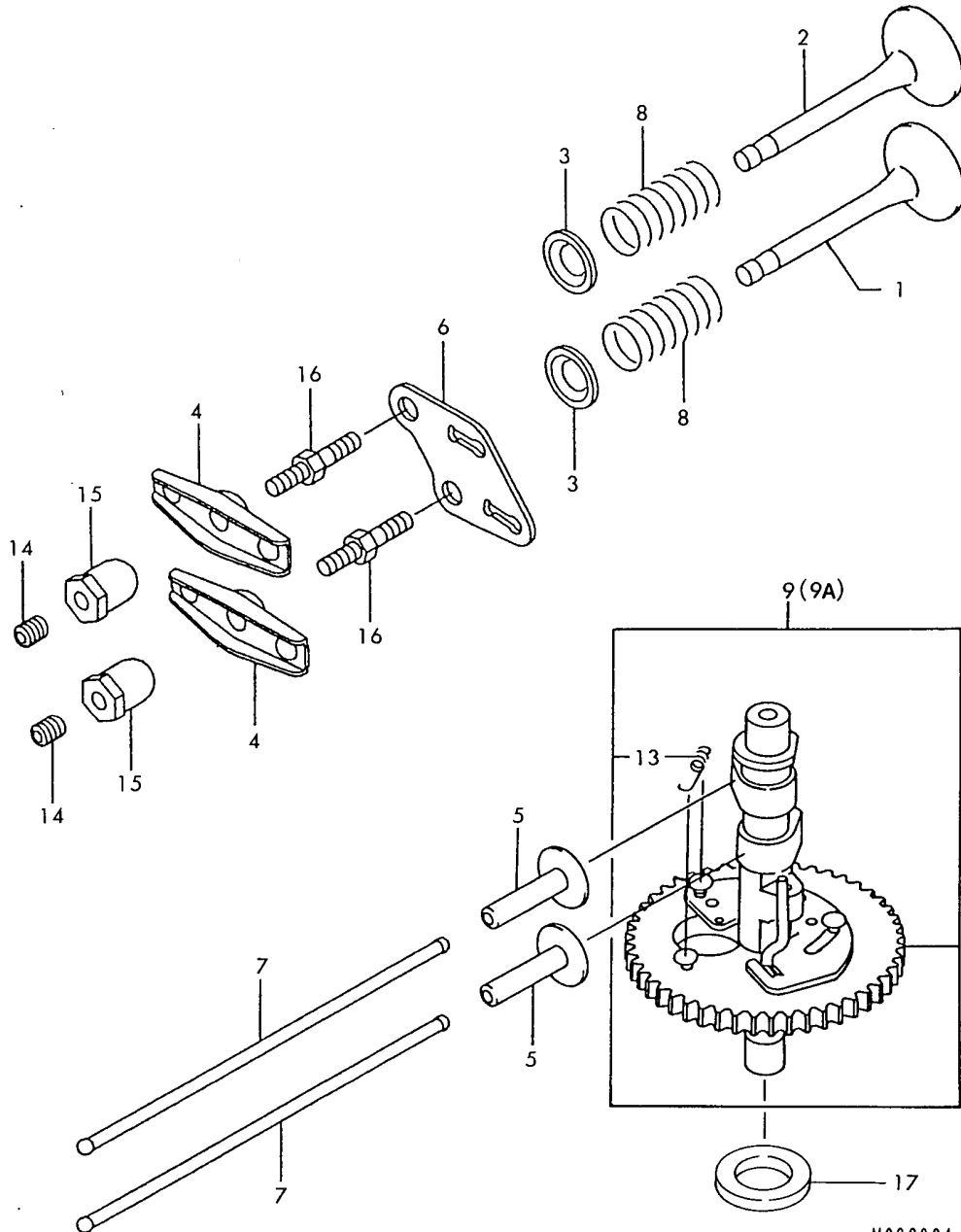
(D)=
(E)=
(F)=

REF.	LEV.	PARTS NO.	DESCRIPTION	QTY						I	R
				(A)	(B)	(C)	(D)	(E)	(F)		
1	1	1Z1300-12134	PISTON-ENGINE	1	1						
2	1	1Z1300-21004	PIN, PISTON	1	1						
3	1	1Z1300-86029	RING-SET-PISTON	1	1						
4	1	1Z1303-12078	CRANKSHAFT-COMP	1	1						
5	2	1Z5905-12330	GEAR-SPUR	1	1						
6	2	1Z551A-03060	PIN-DOWEL	1	1						
7	1	1Z1325-16052	ROD-ASSY-CONNECTING	1	1						
8	2	1Z9215-02122	BOLT,CONNECTING ROD	2	2						
9	1	1Z5801-31220	SNAP RING	2							
9-1	1	1Z9203-32053	SNAP RING	2							R
		(A=EXXXXXX)									
10	1	1Z9220-02058	WASHER,28X40X0.5	1							
10-1	1	1Z9220-02069	WASHER	1							R
		(A=EXXXXXX)									
11	1	1Z1302-52099	RING L SET 0.5,PISTN	1	1						1
12	1	1Z1302-92121	PISTON L 0.50,ENGINE	1	1						1
13	1	1Z9203-32053	SNAP RING								2
14	1	1Z9220-02069	WASHER								1

Remarks
(1) OVER SIZE

Fig.3. VALVES & CAMSHAFT

3. VALVES & CAMSHAFT



N088364

0CNP3-G02200 3. VALVES & CAMSHAFT

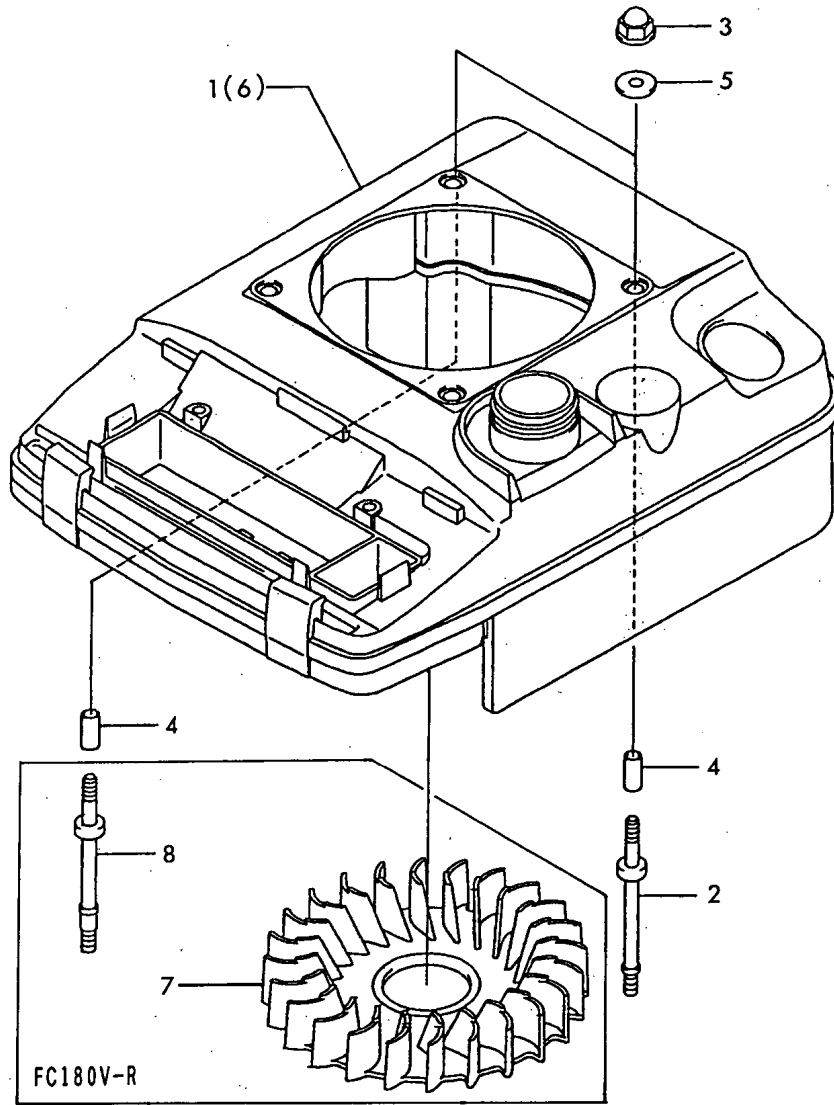
(A)=FC180V
(B)=FC180V-R
(C)=

(D)=
(E)=
(F)=

REF.	LEV.	PARTS NO.	DESCRIPTION	QTY						I	R
				(A)	(B)	(C)	(D)	(E)	(F)		
1	1	1Z1200-42101	VALVE-INTAKE	1	1						
2	1	1Z1200-52089	VALVE-EXHAUST	1	1						
3	1	1Z1200-92062	RETAINER-VALVE SPRIN	2	2						
4	1	1Z1201-62057	ARM-ROCKER	2	2						
5	1	1Z1203-22065	TAPPET	2	2						
6	1	1Z1307-02091	GUIDE	1	1						
7	1	1Z1311-62065	ROD-PUSH	2	2						
8	1	1Z4907-82064	SPRING-ENGINE-VALVE	2	2						
9	1	1Z4911-82110	CAMSHAFT-COMP	1							
9-1	1	1Z4911-82126	CAMSHAFT ASSY	1							N
		(A=E012576)									
9A	1	1Z4911-82126	CAMSHAFT ASSY		1						
13	2	1Z9214-42315	SPRING	1	1						
14	1	1Z9200-92341	SCREW	2	2						
15	1	1Z9201-52253	NUT	2	2						
16	1	1Z9215-02248	BOLT	2	2						
17	1	1Z9202-22690	SPACER	1	1						W
		(A=E017768)	(B=E017768)								

Fig.5. COOLING DEVICE

5. COOLING DEVICE



OCNP3-G02200 5. COOLING DEVICE

(A)=FC180V
(B)=FC180V-R
(C)=

(D)=
(E)=
(F)=

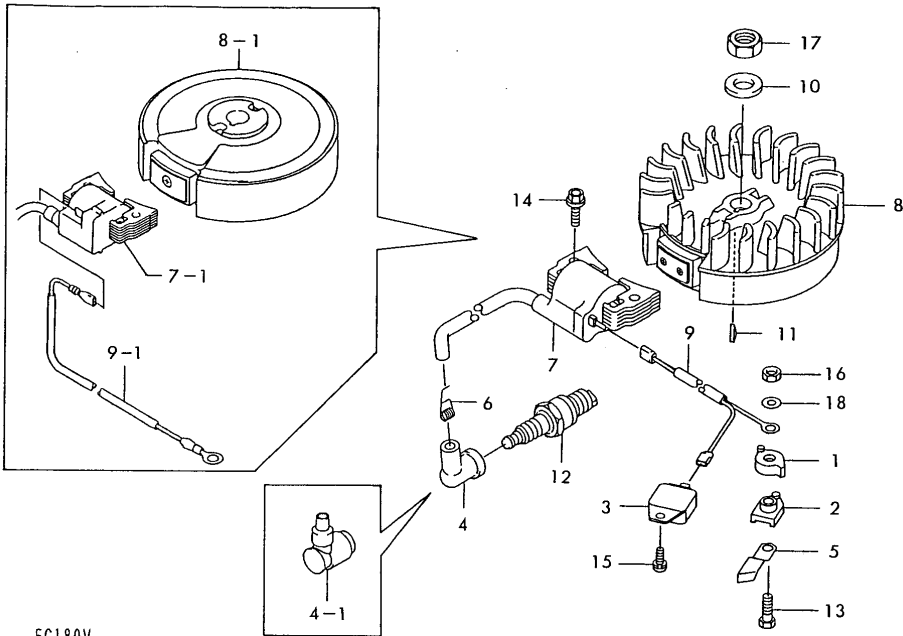
REF.	LEV.	PARTS NO.	DESCRIPTION	QTY						I	R
				(A)	(B)	(C)	(D)	(E)	(F)		
1	1	1Z1409-02033	COVER	1							
1-1	1	1Z1409-02063 (A=EXXXXXX)	COVER	1							R 1
1-2	1	1Z1409-02097 (A=E023999)	COVER	1							N 1
2	1	1Z9200-42135	STUD	4	3						
3	1	1Z9201-51170	NUT	4	4						
4	1	1Z9202-62273	SPACER,6.2X7.8X17	4	4						
5	1	1Z9220-02037	WASHER	4	4						
6	1	1Z1409-02063	COVER		1						1
6-1	1	1Z1409-02097 (B=E023999)	COVER		1						N 1
7	1	1Z5904-12083 (A=E016381)	FAN	1	1						W
8	1	1Z9200-42139	STUD		1						

Remarks

(1)WHEN ORDERING COVER,UPPER,PLEASE
ORDER SAFETY LABEL(ITEM NO.12
REF NO.5 PART NO. 1Z5607-02021)
AND PUT IT ON THE COVER.

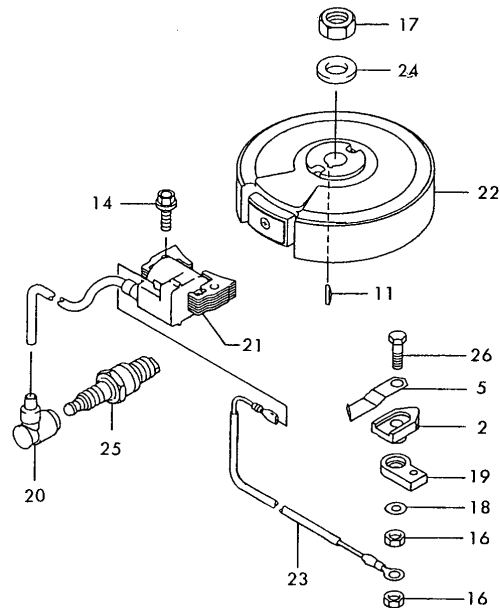
Fig.6. ELECTRICAL PARTS

6. ELECTRICAL PARTS



FC180V

FC180V-R



N088367

OCNP3-G02200 6. ELECTRICAL PARTS

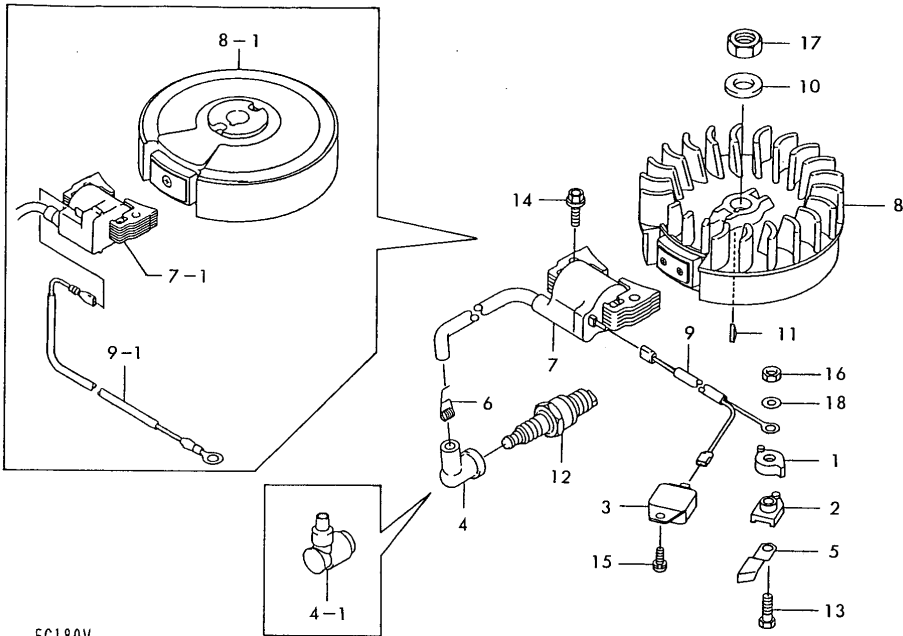
(A)=FC180V
(B)=FC180V-R
(C)=

(D)=
(E)=
(F)=

REF.	LEV.	PARTS NO.	DESCRIPTION	QTY						I	R
				(A)	(B)	(C)	(D)	(E)	(F)		
1	1	1Z1402-42183	COVER	1							
2	1	1Z1607-32165	INSULATOR	1	1						
3	1	1Z2111-92139	IGNITER	1							Z
		(A=E016381)									
4	1	1Z2113-02066	CAP, PLUG	1							
4-1	1	1Z2113-02060	CAP, SPARKING PLUG	1							S
		(A=E021351)									
5	1	1Z2116-92066	TERMINAL	1	1						
6	1	1Z7270-84190	SPRING	1							
6-1	1	1Z2116-92004	TERMINAL	1							R
		(A=EXXXXXX)									
6-2	1	1Z2116-92004	TERMINAL	1							Z
		(A=E021351)									
7	1	1Z2117-12176	COIL, IGNITION	1							
7-1	1	1Z2117-12200	COIL-ASSY-IGNITION	1							S
		(A=E016381)									
8	1	1Z2119-42249	FLYWHEEL-COMP	1							
8-1	1	1Z2119-42292	FLYWHEEL-COMP	1							S
		(A=E016381)									
9	1	1Z2601-12297	WIRE-LEAD	1							
9-1	1	1Z2601-12306	WIRE-LEAD	1							S
		(A=E016381)									
9-2	1	1Z2601-12355	WIRE-LEAD	1							N
		(A=E021426)									
10	1	1Z4401-34820	WASHER	1							
10-1	1	1Z9202-22102	WASHER	1							R
		(A=EXXXXXX)									
11	1	1Z9203-82077	KEY	1	1						
12	1	1Z9207-01167	SPARK PLUG BP5ES	1							
12-1	1	1Z9207-02077	PLUG BPR5ES, SPARKING	1							S
		(A=E021351)									
13	1	1Z110B-05220	BOLT-FLANGED	1							
13-1	1	1Z112B-05220	BOLT-UPSET M5	1							R
		(A=EXXXXXX)									
13-2	1	1Z9215-02300	BOLT, 4X20	1							S
		(A=E017987)									
14	1	1Z130G-06250	BOLT-FLANGED	2	2						
15	1	26022-040082	SCREW M 4X 8	1							Z
		(A=E016381)									
16	1	1Z311B-05000	NUT 5	1	2						
16-1	1	26756-040002	LOCK NUT M 4 PLATED	1							S
		(A=E017987)									
17	1	26737-140002	NUT M14	1	1						
18	1	22117-050000	WASHER 5	1	1						
18-1	1	22137-040000	WASHER 4, POLISHED	1							S
		(A=E017987)									
19	1	1Z1607-32123	INSULATOR		1						
20	1	1Z2113-02060	CAP, SPARKING PLUG		1						
21	1	1Z2117-12200	COIL-ASSY-IGNITION		1						
22	1	1Z2119-42292	FLYWHEEL-COMP		1						
23	1	1Z2601-12306	WIRE-LEAD		1						

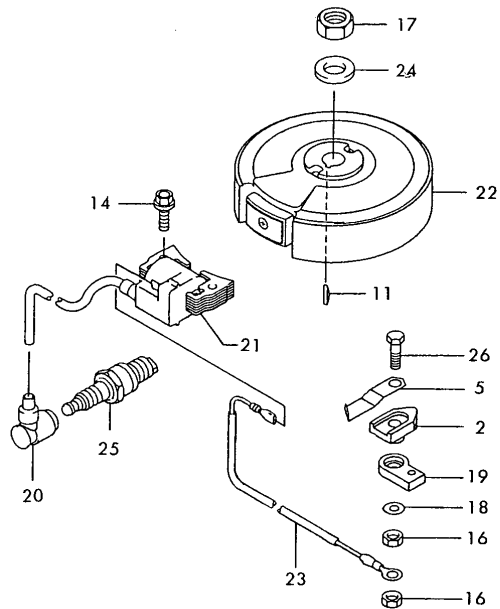
Fig.6. ELECTRICAL PARTS

6. ELECTRICAL PARTS



FC180V

FC180V-R



N088367

OCNP3-G02200 6. ELECTRICAL PARTS

(A)=FC180V
(B)=FC180V-R
(C)=

(D)=
(E)=
(F)=

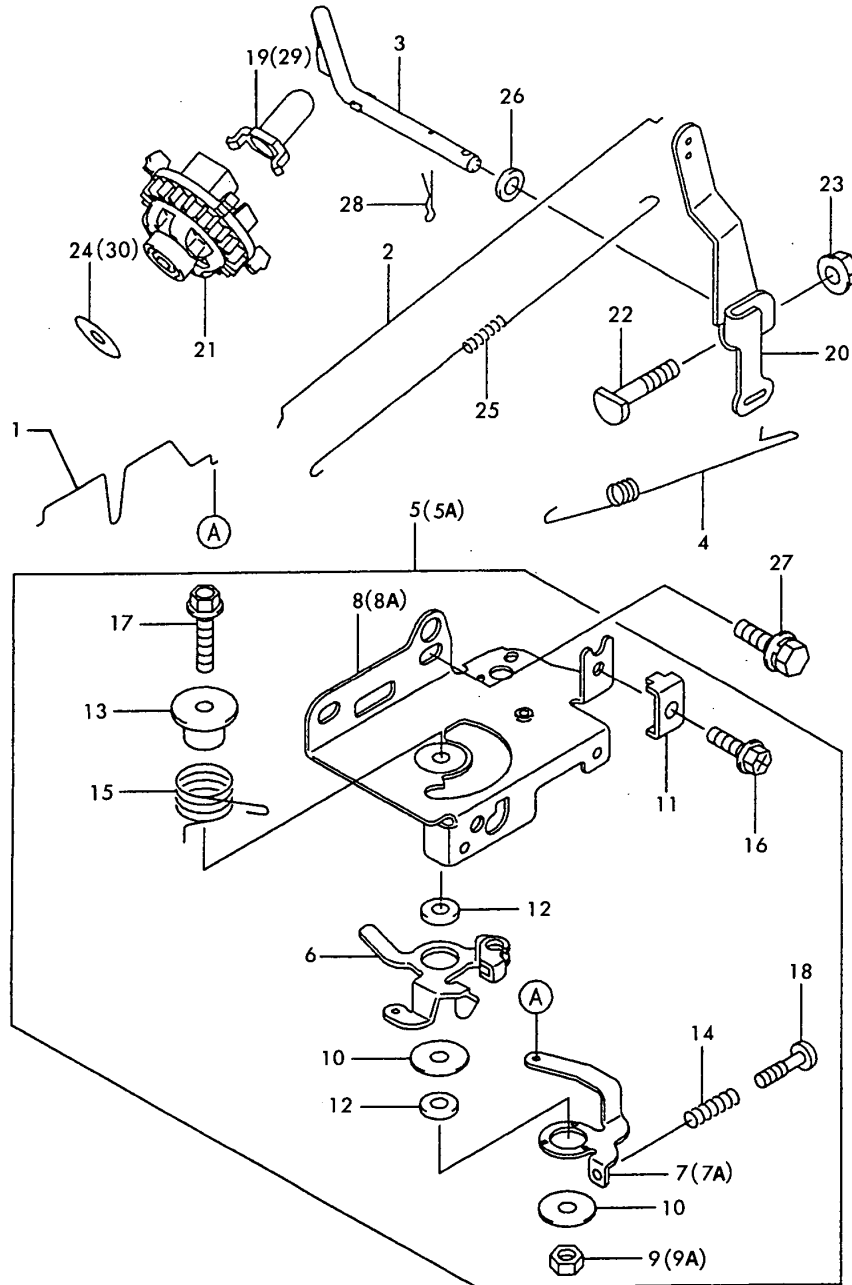
REF.	LEV.	PARTS NO.	DESCRIPTION	QTY						I	R
				(A)	(B)	(C)	(D)	(E)	(F)		
23-1	1	1Z2601-12355 (A=E021426)	WIRE-LEAD		1						N
24	1	1Z9202-22102	WASHER		1						
25	1	1Z9207-02077	PLUG BPR5ES, SPARKING		1						
26	1	1Z112B-05220	BOLT-UPSET M5		1						

Fig.7. CONTROLLING DEVICE

(A)=FC180V
(B)=FC180V-R
(C)=

(D)=
(E)=
(F)=

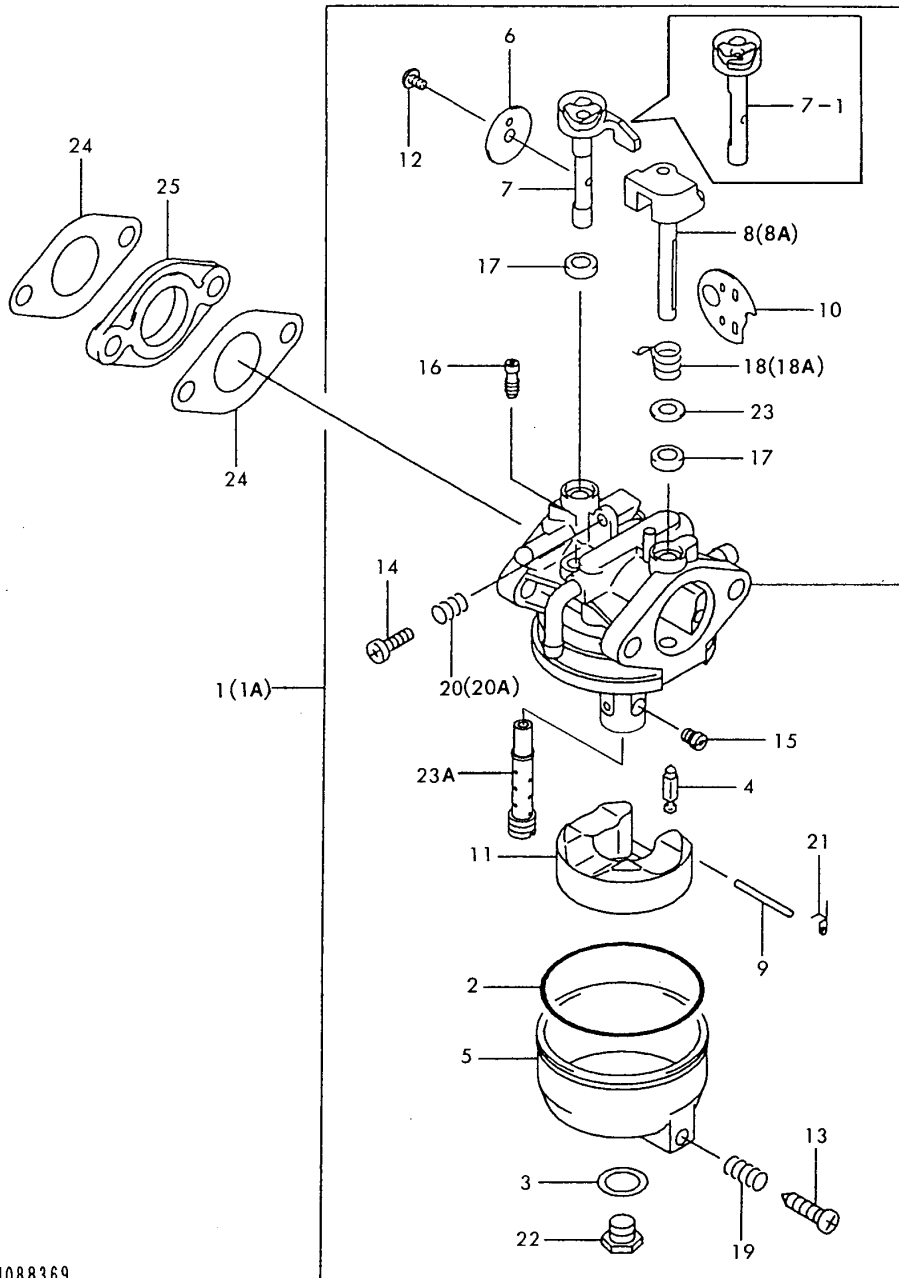
7. CONTROLLING DEVICE



REF.	LEV.	PARTS NO.	DESCRIPTION	QTY						I	R
				(A)	(B)	(C)	(D)	(E)	(F)		
1	1	1Z1616-92111	LINK-CHOKE	1	1						
2	1	1Z1617-12068	LINK	1	1						
3	1	1Z3900-32077	ARM-PIVOT	1	1						
4	1	1Z3912-92054	SPRING-GOVERNOR	1	1						
5	1	1Z3918-02796	PANEL-ASSY-CONTROL	1							
5-1	1	1Z3918-02895	PANEL ASSY.,CONTROL	1							N
(A=E005625)											
5A	1	1Z3918-02895	PANEL ASSY.,CONTROL		1						
6	2	1Z1316-82352	LEVER	1	1						
7	2	1Z1316-82353	LEVER	1							
7-1	2	1Z1316-82388	LEVER	1							N
(A=E005625)											
7A	2	1Z1316-82388	LEVER		1						
8	2	1Z5922-62256	PANEL-CONTROL	1							
8-1	2	1Z5922-62291	CONTROL PANEL	1							N
(A=E005625)											
8A	2	1Z5922-62291	CONTROL PANEL		1						
9	2	1Z4401-53850	NUT	1							
9-1	2	1Z9201-52051	NUT	1							R
(A=EXXXXXXX)											
9A	2	1Z9201-52051	NUT		1						
10	2	1Z9202-22372	WASHER,6X20X1.2	2	2						
11	2	1Z9203-72209	CLAMP	1	1						
12	2	1Z9214-32135	COLLAR,6X13X2.3	2	2						
13	2	1Z9214-32148	COLLAR	1	1						
14	2	1Z9214-42266	SPRING	1	1						
15	2	1Z9214-42316	SPRING	1	1						
16	2	1Z9215-02182	BOLT,5X18	1	1						
17	2	1Z130B-06300	BOLT-FLANGED	1	1						
18	2	1Z214B-04200	SCREW-PAN+-	1	1						
19	1	1Z4401-51211	SLEEVE,GOVERNOR	1							
19-1	1	1Z4203-62051	SLEEVE	1							R
(A=EXXXXXXX)											
20	1	1Z4910-32127	ARM-GOVERNOR	1	1						
21	1	1Z4911-02080	GOVERNOR-ASSY	1	1						
22	1	1Z9200-22269	BOLT	1	1						
23	1	1Z9201-51193	NUT	1	1						
24	1	1Z4401-51350	WASHER	1							
24-1	1	1Z9202-22019	WASHER	1							R
(A=EXXXXXXX)											
25	1	1Z9214-42329	SPRING	1	1						
26	1	1Z9220-02029	WASHER 6	1	1						
27	1	1Z0016-06140	BOLT 6X14 W/SP.WSHR.	2	2						
28	1	22372-060000	SNAP PIN 6	1	1						
29	1	1Z4203-62051	SLEEVE		1						
30	1	1Z9202-22019	WASHER		1						

Fig.8. CARBURETOR

8. CARBURETOR



OCNP3-G02200 8. CARBURETOR

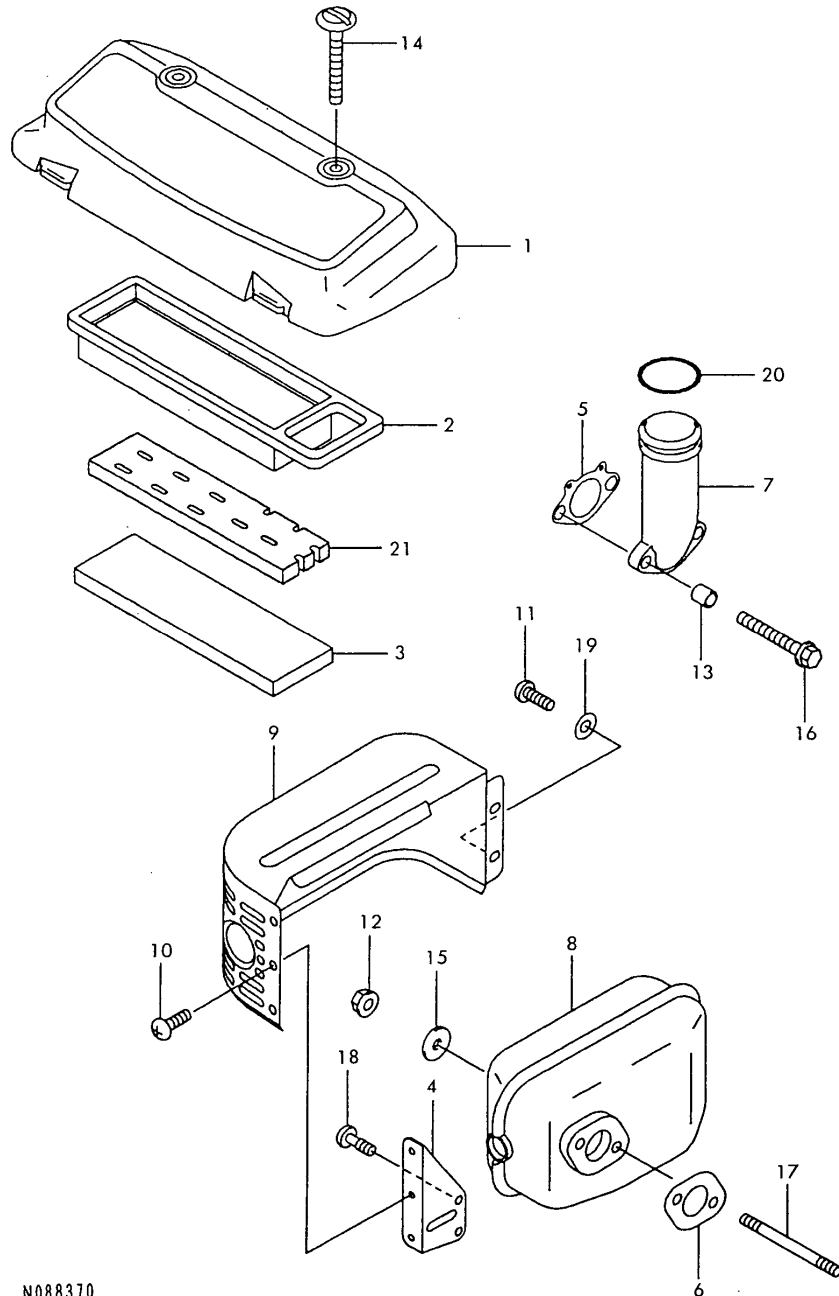
(A)=FC180V
(B)=FC180V-R
(C)=

(D)=
(E)=
(F)=

REF.	LEV.	PARTS NO.	DESCRIPTION	Q'TY						I	R
				(A)	(B)	(C)	(D)	(E)	(F)		
1	1	1Z1500-32227	CARBURETOR-ASSY	1							
1-1	1	1Z1500-32351	CARBURETOR-ASSY	1							R
(A=E009280)											
1-2	1	1Z1500-32618	CARBURETOR-ASSY	1							S
(A=E029693)											
1A	1	1Z1500-32351	CARBURETOR-ASSY		1						
2	2	1Z1106-02190	GASKET	1	1						
3	2	1Z1106-02191	GASKET	1	1						
4	2	1Z1600-92136	NEEDLE-JET	1	1						
5	2	1Z1602-02129	CHAMBER-FLOAT	1	1						
6	2	1Z1602-52166	VALVE-THROTTLE	1	1						
7	2	1Z1604-12222	SHAFT	1	1						
7-1	2	1Z1604-12244	SHAFT-CARBURETOR	1	1						R
(A=EXXXXXX)											
8	2	1Z1604-12223	SHAFT	1							
8-1	2	1Z1604-12231	SHAFT	1							R
(A=E009280)											
8A	2	1Z1604-12231	SHAFT		1						
9	2	1Z1604-12224	SHAFT	1	1						
10	2	1Z1612-62191	VALVE,CHOKE	1	1						
11	2	1Z1618-32002	FLOAT-ASSY	1	1						
12	2	1Z2301-32058	SCREW-ASSY	1	1						
13	2	1Z9200-92348	SCREW	1	1						
14	2	1Z9200-92349	SCREW	1	1						
15	2	1Z9206-32242	JET-MAIN	1	1						
15-1	2	1Z9206-32338	JET-MAIN,#84	1							R
(A=E029693)											
16	2	1Z9206-42094	JET-PILOT	1	1						
16-1	2	1Z9206-42122	JET-PILOT	1							R
(A=E029693)											
17	2	1Z9209-32100	SEAL	2	2						
18	2	1Z9214-42332	SPRING	1							
18-1	2	1Z9214-42364	SPRING	1							R
(A=EXXXXXX)											
18A	2	1Z9214-42364	SPRING		1						
19	2	1Z9214-42333	SPRING	1	1						
20	2	1Z9214-42334	SPRING	1							
20-1	2	1Z9208-12234	SPRING	1							R
(A=E009280)											
20A	2	1Z9208-12234	SPRING		1						
21	2	1Z9214-42335	SPRING	1	1						
22	2	1Z9215-02263	BOLT	1	1						
23	2	1Z9220-02061	WASHER,9.8X5.5X1.0	1	1						
23A	2	1Z4912-12190	NOZZLE-MAIN	1	1						W
(A=E009280)											
24	1	1Z1106-02144	GASKET,CARBURETOR	2	2						
25	1	1Z1607-32164	INSULATOR	1	1						

Fig.9. AIR FILTER & MUFFLER

9. AIR FILTER & MUFFLER



OCNP3-G02200 9. AIR FILTER & MUFFLER

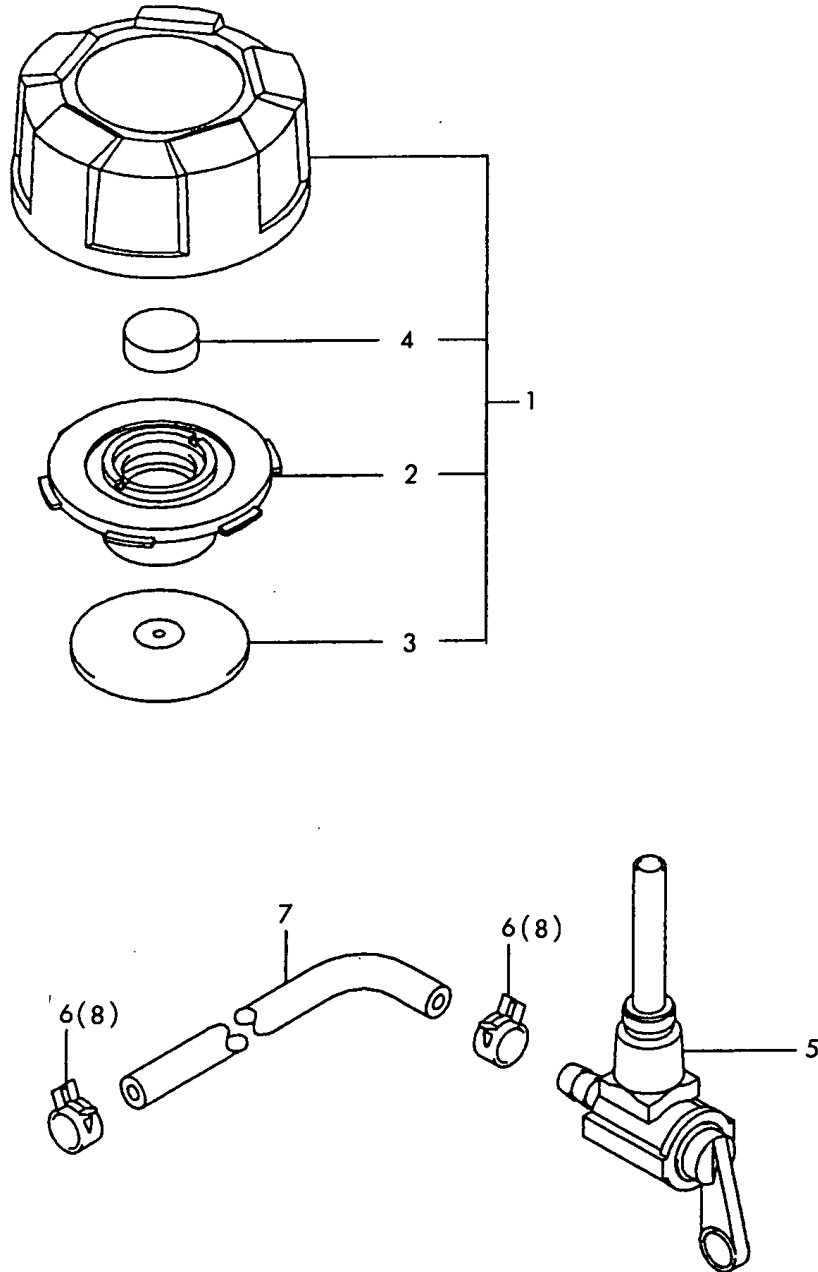
(A)=FC180V
(B)=FC180V-R
(C)=

(D)=
(E)=
(F)=

REF.	LEV.	PARTS NO.	DESCRIPTION	QTY						I	R
				(A)	(B)	(C)	(D)	(E)	(F)		
1	1	1Z1101-22327	CAP,AIR FILTER	1	1						
2	1	1Z1101-32151	ELEMENT-AIR FILTER	1	1						
2-1	1	1Z1101-32181	ELEMENT-AIR FILTER	1							S
(A=E029693)											
3	1	1Z1101-32152	ELEMENT-AIR FILTER	1	1						
4	1	1Z1104-62053	BRACKET	1	1						
5	1	1Z1106-02141	GASKET	1	1						
6	1	1Z1106-02185	GASKET,MUFFLER	1	1						
7	1	1Z1606-02171	PIPE-INTAKE	1	1						
8	1	1Z4907-02491	MUFFLER-COMP	1	1						
9	1	1Z4910-62446	COVER-MUFFLER	1	1						
10	1	1Z9200-92166	SCREW	3	3						
11	1	1Z9200-92308	SCREW	2	2						
12	1	1Z9201-51193	NUT	2	2						
13	1	1Z9202-62272	SPACER,6.2X7.8X8	2	2						
14	1	1Z9215-02152	BOLT	2	2						
15	1	1Z9220-02032	WASHER 7X21X2.3	2	2						
16	1	1Z156R-06800	BOLT-WP	2	2						
17	1	1Z172G-06800	BOLT-STUD	2	2						
18	1	1Z214B-05100	SCREW M5X10	2	2						
19	1	22137-050000	WASHER 5, POLISHED	2	2						
20	1	1Z670B-30320	O RING	1	1						
21	1	1Z1101-32180	ELEMENT-AIR FILTER	1							W
(A=E029693)											

Fig.10. FUEL TANK & FUEL VALVE

10. FUEL TANK & FUEL VALVE



OCNP3-G02200 10. FUEL TANK & FUEL VALVE

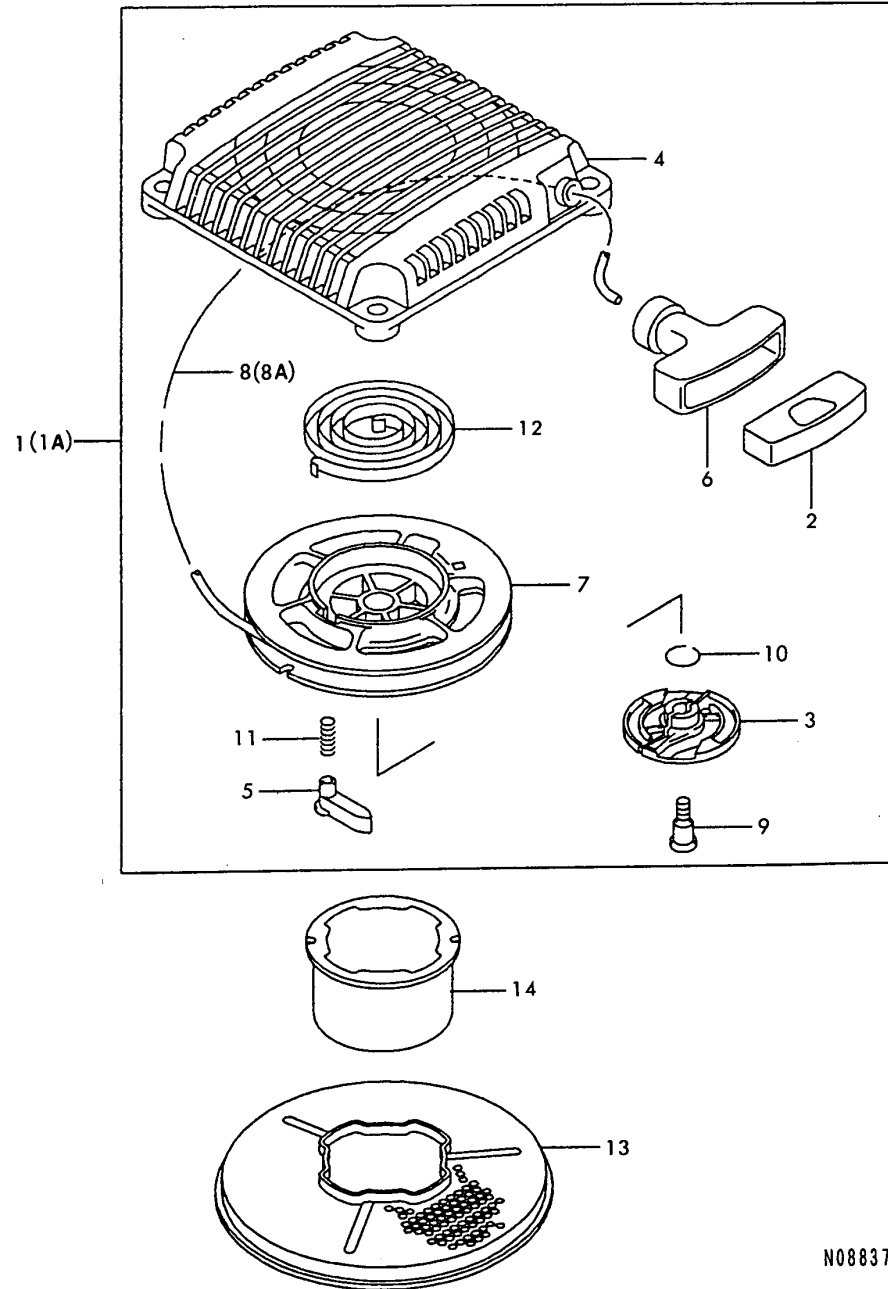
(A)=FC180V
(B)=FC180V-R
(C)=

(D)=
(E)=
(F)=

REF.	LEV.	PARTS NO.	DESCRIPTION	Q'TY						I	R
				(A)	(B)	(C)	(D)	(E)	(F)		
1	1	1Z5104-82072	CAP-ASSY-TANK	1	1						
2	2	1Z1106-02145	GASKET	1	1						
3	2	1Z1318-32505	PLATE	1	1						
4	2	1Z4910-92054	ELEMENT-BREATHER	1	1						
5	1	1Z5102-32160	TAP-ASSY	1	1						
6	1	1Z6677-68120	CLIP		2						
6-1	1	1Z9203-72113	CLAMP		2						R
		(A=EXXXXXX)									
7	1	1Z9219-02113	TUBE,5X10X223	1	1						
8	1	1Z9203-72113	CLAMP		2						

Fig.11. STARTER

11. STARTER



(A)=FC180V
(B)=FC180V-R
(C)=

(D)=
(E)=
(F)=

REF.	LEV.	PARTS NO.	DESCRIPTION	QTY						I	R
				(A)	(B)	(C)	(D)	(E)	(F)		
1	1	1Z4908-82423	STARTER-RECOIL	1							
1A	1	1Z4908-82441	STARTER,		1						
2	2	1Z1101-22255	CAP,GRIP	1	1						
3	2	1Z1307-02088	GUIDE,PAWL	1	1						
4	2	1Z1309-12129	HOLDER	1	1						
5	2	1Z1316-52082	PAWL,RECOIL STARTER	2	2						
6	2	1Z4607-52082	GRIP,RECOIL STARTER	1	1						
7	2	1Z5910-12095	REEL,RECOIL STARTER	1	1						
8	2	1Z5910-62126	ROPE,3.8X1650	1							
8A	2	1Z5910-62131	ROPE 3.8X2450		1						
9	2	1Z9200-92347	SCREW	1	1						
10	2	1Z9203-32160	RING-SNAP	1	1						
11	2	1Z9214-42177	SPRING,RETURN	2	2						
12	2	1Z9214-42272	SPRING	1	1						
13	1	1Z1403-72127	SCREEN	1	1						
14	1	1Z4908-02166	PULLEY-STARTING	1	1						

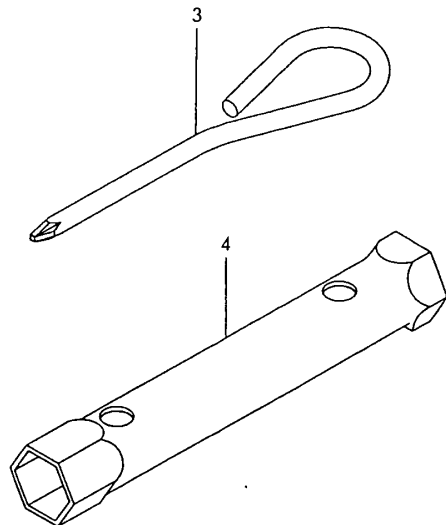
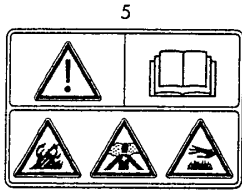
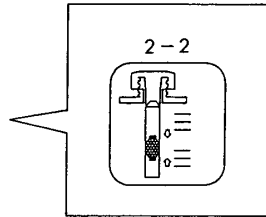
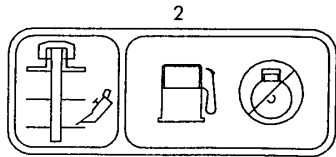
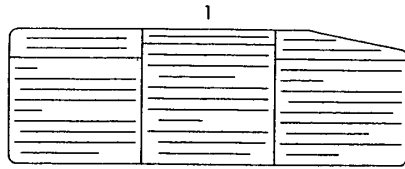
N088372

Fig.12. LABELS & ACCESSORIES

(A)=FC180V
(B)=FC180V-R
(C)=

(D)=
(E)=
(F)=

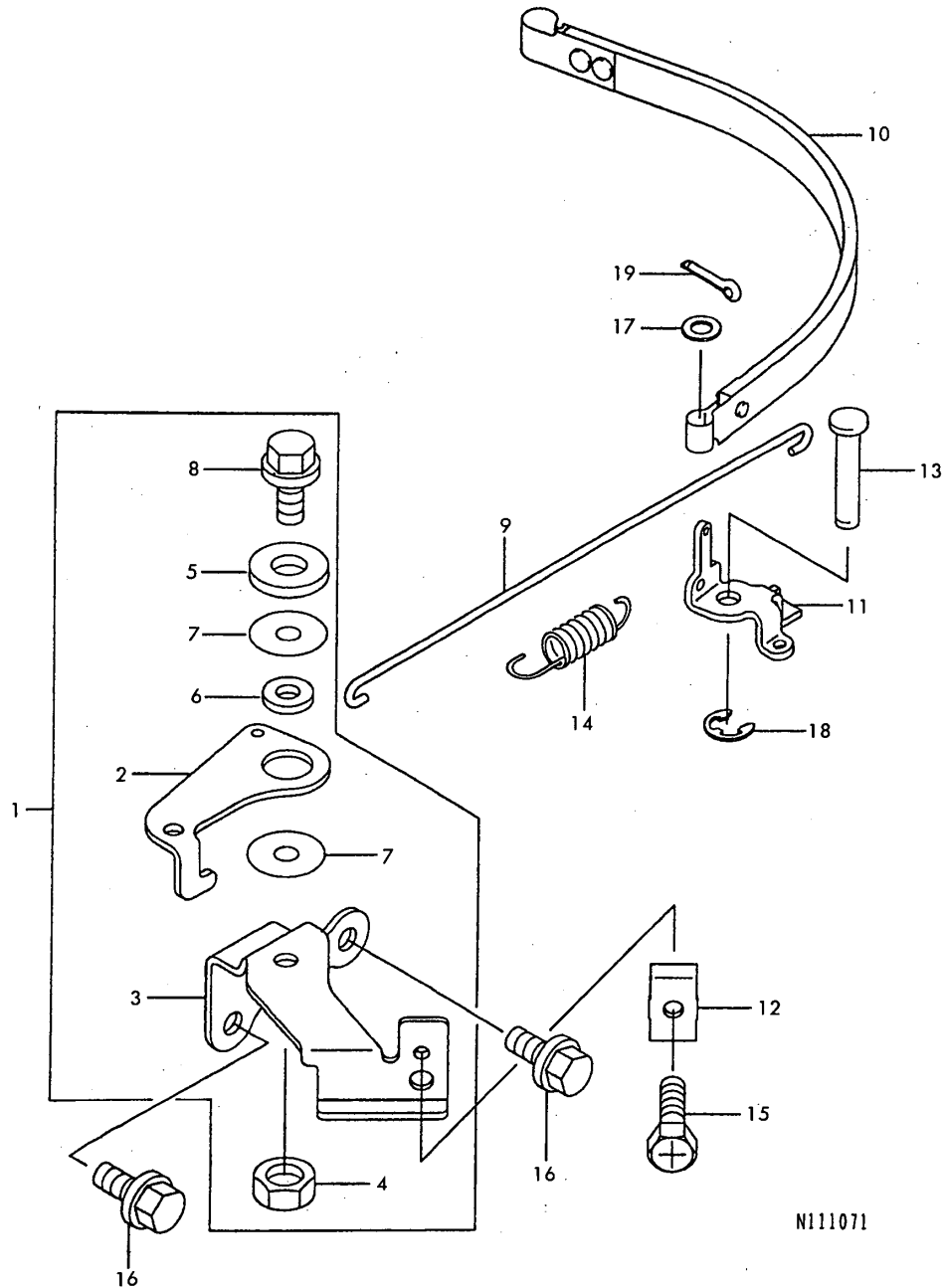
12. LABELS & ACCESSORIES



REF.	LEV.	PARTS NO.	DESCRIPTION	Q'TY						I	R
				(A)	(B)	(C)	(D)	(E)	(F)		
1	1	1Z5603-12375	LABEL-MANUAL	1	1						
1-1	1	1Z5603-32062	LABEL-MANUAL	1							S
			(A=E029693)								
2	1	1Z5603-12447	LABEL-MANUAL	1	1						
2-1	1	1Z5603-12470	LABEL-MANUAL	1	1						N
			(A=E017768) (B=E017768)								
2-2	1	1Z5603-12376	LABEL-MANUAL	1	1						S
			(A=E021351) (B=E021291)								
3	1	1Z9210-72057	TOOL-DRIVER	1							Z
			(A=E009280)								
4	1	1Z9211-02093	WRENCH,19X21	1							Z
			(A=E009280)								
5	1	1Z5607-02021	LABEL-WARNING	1	1						W
			(A=E021351) (B=E021291)								

Fig.13. BRAKE(ADDITIONAL FIG.

13. BRAKE (ADDITIONAL ITEM)



N111071

(A)=FC180V
(B)=FC180V-R
(C)=

(D)=
(E)=
(F)=

REF.	LEV.	PARTS NO.	DESCRIPTION	QTY						I	R	
				(A)	(B)	(C)	(D)	(E)	(F)			
1	1	1Z4103-52051	PANEL ASSY.,BRAKE		1							
2	2	1Z1316-82400	LEVER		1							
3	2	1Z5922-62296	PANEL, CONTROL		1							
4	2	1Z9201-52051	NUT		1							
5	2	1Z9202-22372	WASHER,6X20X1.2		1							
6	2	1Z9214-32208	COLLAR		1							
7	2	1Z9220-02036	WASHER		1							
8	2	1Z130B-06140	BOLT-FLANGED		1							
9	1	1Z1617-12076	LINK		1							
10	1	1Z3918-72053	BAND-BRAKE		1							
11	1	1Z4300-12056	LEVER,BRAKE		1							
12	1	1Z9203-72209	CLAMP		1							
13	1	1Z9204-32170	PIN		1							
14	1	1Z9214-42362	SPRING		1							
15	1	1Z9215-02182	BOLT,5X18		1							
16	1	1Z130B-06140	BOLT-FLANGED		2							
17	1	22117-050000	WASHER 5		1							
18	1	1Z482L-40000	RING,SNAP		1							
19	1	22417-200100	COTTER PIN 2.0X10		1							

Part Number Index

All parts are stipulated in the order of part numbers.

(Depending on the area in which the part is used.)

This index will display the location of the part according to each part number.

PARTS No. INDEX

PARTS No.	Fig.	Ref.No.
1Z0016-06140	7	27
1Z0056-06120	1	28
1Z1100-42117	1	1
1Z1100-82097	1	2
1Z1100-82117	1	2 -1
1Z1100-82118	1	2 -2
1Z1100-92346	4	1
1Z1101-22255	11	2
1Z1101-22327	9	1
1Z1101-32151	9	2
1Z1101-32152	9	3
1Z1101-32180	9	21
1Z1101-32181	9	2 -1
1Z1102-22067	1	3
1Z1104-62053	9	4
1Z1104-92019	1	35
1Z1106-02139	1	4
1Z1106-02141	9	5
1Z1106-02142	1	5
1Z1106-02143	1	6
1Z1106-02144	8	24
1Z1106-02145	10	2
1Z1106-02185	9	6
1Z1106-02190	8	2
1Z1106-02191	8	3
1Z110B-05220	6	13
1Z112B-05220	6	13 -1
		26
1Z1200-42101	3	1
1Z1200-52089	3	2
1Z1200-92062	3	3
1Z1201-62057	3	4
1Z1203-22065	3	5
1Z1300-12134	2	1
1Z1300-21004	2	2
1Z1300-86029	2	3
1Z1302-52099	2	11
1Z1302-92121	2	12
1Z1303-12078	2	4
1Z1307-02088	11	3
1Z1307-02091	3	6
1Z1307-02092	4	2
1Z1309-12129	11	4
1Z130B-06140	13	8
		16
1Z130B-06300	7	17
1Z130G-06250	6	14
1Z130G-08350	1	24
1Z130G-08450	1	25
1Z1310-72255	1	7

PARTS No.	Fig.	Ref.No.
1Z1310-72256	1	8
1Z1310-72269	1	8 -1
		31
1Z1310-72272	1	8 -2
		31 -1
1Z1311-62065	3	7
1Z1316-52082	11	5
1Z1316-82352	7	6
1Z1316-82353	7	7
1Z1316-82388	7	7 -1
		7 A
1Z1316-82400	13	2
1Z1318-32504	1	9
1Z1318-32505	10	3
1Z1325-16052	2	7
1Z1402-42183	6	1
1Z1403-72127	11	13
1Z1409-02032	1	10
1Z1409-02033	5	1
1Z1409-02063	5	1 -1
		6
1Z1409-02094	1	10 -1
1Z1409-02097	5	1 -2
		6 -1
1Z1500-32227	8	1
1Z1500-32351	8	1 -1
		1 A
		1 -2
1Z1500-32618	8	1
1Z156R-06800	9	16
1Z1600-92136	8	4
1Z1602-02129	8	5
1Z1602-52166	8	6
1Z1604-12222	8	7
1Z1604-12223	8	8
1Z1604-12224	8	9
1Z1604-12231	8	8 -1
		8 A
1Z1604-12244	8	7 -1
1Z1606-02171	9	7
1Z1607-32123	6	19
1Z1607-32164	8	25
1Z1607-32165	6	2
1Z1612-62146	1	11
1Z1612-62191	8	10
1Z1616-92111	7	1
1Z1617-12068	7	2
1Z1617-12076	13	9
1Z1618-32002	8	11
1Z172G-06800	9	17
1Z2111-92139	6	3

PARTS No.	Fig.	Ref.No.
1Z2113-02060	6	4 -1
		20
1Z2113-02066	6	4
1Z2116-92004	6	6 -1
		6 -2
1Z2116-92066	6	5
1Z2117-12176	6	7
1Z2117-12200	6	7 -1
		21
1Z2119-42249	6	8
1Z2119-42292	6	8 -1
		22
1Z214B-04200	7	18
1Z214B-05100	9	18
1Z2301-32058	8	12
1Z2601-12297	6	9
1Z2601-12306	6	9 -1
		23
1Z2601-12355	6	9 -2
		23 -1
1Z311B-05000	6	16
1Z3900-32077	7	3
1Z3912-92054	7	4
1Z3918-02796	7	5
1Z3918-02895	7	5 -1
		5 A
1Z3918-72053	13	10
1Z4103-52051	13	1
1Z4203-62051	7	19 -1
		29
1Z4300-12056	13	11
1Z4401-34820	6	10
1Z4401-51211	7	19
1Z4401-51350	7	24
1Z4401-53850	7	9
1Z4607-52082	11	6
1Z482J-90000	1	27
1Z482L-40000	13	18
1Z4901-52291	1	12
1Z4901-52338	1	12 -1
1Z4907-02491	9	8
1Z4907-82064	3	8
1Z4908-02166	11	14
1Z4908-82423	11	1
1Z4908-82441	11	1 A
1Z4910-32127	7	20
1Z4910-62446	9	9
1Z4910-92054	10	4
1Z4911-02080	7	21
1Z4911-82110	3	9

PARTS No.	Fig.	Ref.No.
1Z4911-82126	3	9 -1
		9 A
1Z4912-06074	1	13
1Z4912-06103	1	13 -2
		32 -1
1Z4912-06112	1	13 -1
		32
1Z4912-12190	8	23 A
1Z5102-32160	10	5
1Z5104-82072	10	1
1Z5200-52094	4	3
1Z5200-52124	4	3 -1
1Z551A-03060	2	6
1Z555A-05160	1	30
1Z5603-12375	12	1
1Z5603-12376	12	2 -2
1Z5603-12447	12	2
1Z5603-12470	12	2 -1
1Z5603-32062	12	1 -1
1Z5607-02021	12	5
1Z5801-31220	2	9
1Z5904-12083	5	7
1Z5905-12330	2	5
1Z5905-62790	1	14
1Z5910-12095	11	7
1Z5910-62126	11	8
1Z5910-62131	11	8 A
1Z5922-62256	7	8
1Z5922-62291	7	8 -1
		8 A
1Z5922-62296	13	3
1Z5923-12077	4	4
1Z6677-68120	10	6
1Z670B-30320	9	20
1Z670D-20150	4	6
1Z670D-20160	4	7
1Z7270-84190	6	6
1Z9200-22269	7	22
1Z9200-42135	5	2
1Z9200-42139	5	8
1Z9200-92166	1	15
		9
		10
1Z9200-92308	1	34
		9
		11
1Z9200-92341	3	14
1Z9200-92347	11	9
1Z9200-92348	8	13
1Z9200-92349	8	14
1Z9201-51170	5	3
1Z9201-51193	7	23

PARTS No. INDEX

PARTS No.	Fig.	Ref.No.
1Z9201-51193	9	12
1Z9201-52051	7	9 -1
		9 A
	13	4
1Z9201-52253	3	15
1Z9202-21236	1	16
1Z9202-22019	7	24 -1
		30
1Z9202-22102	6	10 -1
		24
1Z9202-22372	7	10
	13	5
1Z9202-22690	1	16 -2
	3	17
1Z9202-62272	9	13
1Z9202-62273	5	4
1Z9202-82017	1	13 A
		33
1Z9203-32053	2	9 -1
		13
1Z9203-32160	11	10
1Z9203-72113	10	6 -1
		8
1Z9203-72209	7	11
	13	12
1Z9203-82077	6	11
1Z9204-32170	13	13
1Z9204-91062	1	18
1Z9204-92199	1	19
1Z9204-92204	1	20
1Z9204-92210	1	21
1Z9206-32242	8	15
1Z9206-32338	8	15 -1
1Z9206-42094	8	16
1Z9206-42122	8	16 -1
1Z9206-62180	4	5
1Z9207-01167	6	12
1Z9207-02077	6	12 -1
		25
1Z9208-12234	8	20 -1
		20 A
1Z9209-32100	8	17
1Z9210-72057	12	3
1Z9211-02093	12	4
1Z9214-32135	7	12
1Z9214-32148	7	13
1Z9214-32208	13	6
1Z9214-42177	11	11
1Z9214-42266	7	14
1Z9214-42272	11	12

PARTS No.	Fig.	Ref.No.
1Z9214-42315	3	13
1Z9214-42316	7	15
1Z9214-42329	7	25
1Z9214-42332	8	18
1Z9214-42333	8	19
1Z9214-42334	8	20
1Z9214-42335	8	21
1Z9214-42362	13	14
1Z9214-42364	8	18 -1
		18 A
1Z9215-02122	2	8
1Z9215-02152	9	14
1Z9215-02182	7	16
	13	15
1Z9215-02248	3	16
1Z9215-02263	8	22
1Z9215-02300	6	13 -2
1Z9219-02112	1	22
1Z9219-02113	10	7
1Z9220-02029	7	26
1Z9220-02032	9	15
1Z9220-02036	13	7
1Z9220-02037	5	5
1Z9220-02058	2	10
1Z9220-02061	8	23
1Z9220-02069	2	10 -1
		14
1Z9220-02082	1	16 -1

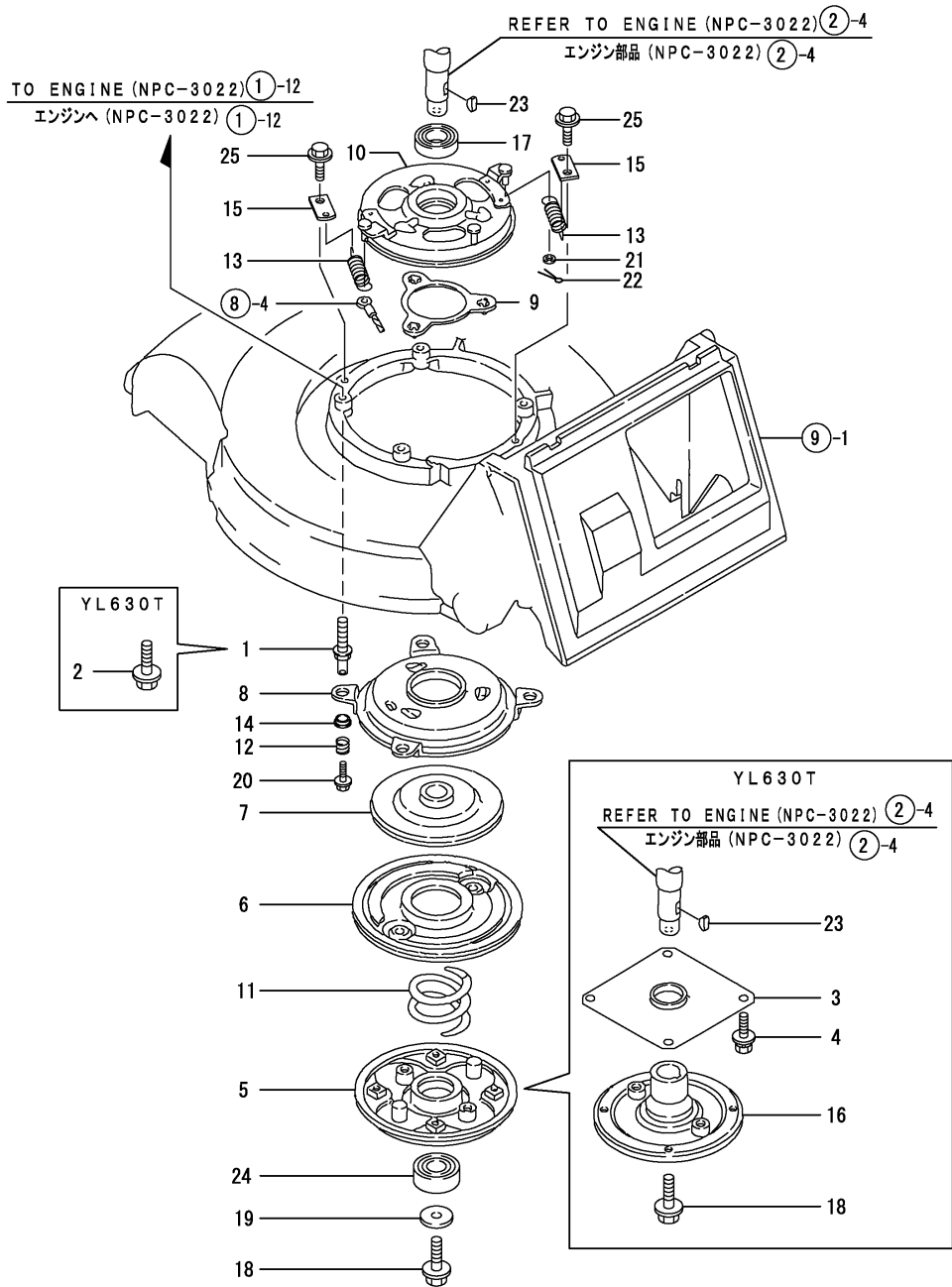
PARTS No.	Fig.	Ref.No.
-----------	------	---------

PARTS No.	Fig.	Ref.No.
-----------	------	---------



YANMAR CO., LTD.

Fig.1. ENGINE RELATED & CLUTCH



OCNP2-G99200 1. ENGINE RELATED & CLUTCH

(A)=YL630T (D)=YL630TSC
 (B)=YL630TS (E)=
 (C)=YL630T-R (F)=

REF.	LEV.	PARTS NO.	DESCRIPTION	QTY						I	R
				(A)	(B)	(C)	(D)	(E)	(F)		
1	1	1E1061-11100	BOLT,ENGINE SET		4		4				
2	1	26107-100352	BOLT 10X35,COLLAR HD	4		4					
I 2-1	1	26106-100352	BOLT M10X 35 PLATED	4		4					R
3	1	1E1071-12750	COVER,ENGINE LOWER	1		1					
4	1	26018-080164	BOLT M 8X 16	4		4					
I 4-1	1	26014-080162	BOLT M 8X 16	4		4					R
5	1	1E1060-12011	PLATE,MAIN		1		1				
6	1	1E1060-12100	DISK		1		1				
7	1	1E1061-12150	DRUM,DRIVE		1		1				
8	1	1E1061-12170	PLATE,DISC		1		1				
9	1	1E1061-12220	BRACKET,BOWL		1		1				
10	1	1E1061-12251	BRACKET,DISK BOWL		1		1				
11	1	1E1071-12300	SPRING,CLUTCH		1		1				
12	1	1E1061-12310	SPRING, GUIDE		4		4				
13	1	1E1071-12320	SPRING,CLUTCH RETURN		2						
I 13-1	1	1E1071-12321	SPRING,CLUTCH RETURN		2		2				N
14	1	1E1060-12340	METAL 106,FLANGED		4		4				
15	1	1E1061-12360	HOOK,RETURN SPRING		2		2				
16	1	1E1061-12650	FRANGE,BLADE		1		1				
17	1	1E1060-12970	BEARING 60/22UU		1		1				
18	1	1E1060-12990	BOLT 10X28,COLLAR HD	1	1	1	1				
19	1	1A1040-46460	WASHER 10X33X4.5		1		1				
20	1	1E4480-99150	BOLT 6X12		4		4				
21	1	22137-060000	WASHER 6, POLISHED		1						
I 21-1	1	1E4030-99230	WASHER 6X16X1		1		1				N
22	1	22417-200120	COTTER PIN 2.0X12		1		1				
23	1	22522-040160	KEY 4X16	1	1	1	1				
24	1	24104-062044	BALL BEARING		1		1				
25	1	26476-080162	BOLT M 8X 16,TAPPING		2		2				

Fig.2. INPUT

0CNP2-G99200 2. INPUT

(A)=YL630T
(B)=YL630TS
(C)=YL630T-R

(D)=YL630TSC
(E)=
(F)=

REF.	LEV.	PARTS NO.	DESCRIPTION	Q'TY						I	R
				(A)	(B)	(C)	(D)	(E)	(F)		
1	1	1E1061-21010	JOINT COMP.,TYPE 10	2	2	2	2				
2	2	1E1061-21030	PIN, FLEXIBLE JOINT	4	4	4	4				
3	2	22242-000200	CIRCLIP 20	4	4	4	4				
4	1	1E1071-21100	SHAFT A 53,SLIDE	1	1	1	1				
5	1	1E1071-21120	SHAFT B 53,SLIDE	1	1	1	1				
6	1	1E1071-21250	COVER 63,P.T.O.	1	1	1	1				
7	1	26476-080162	BOLT M 8X 16,TAPPING	1	1	1	1				

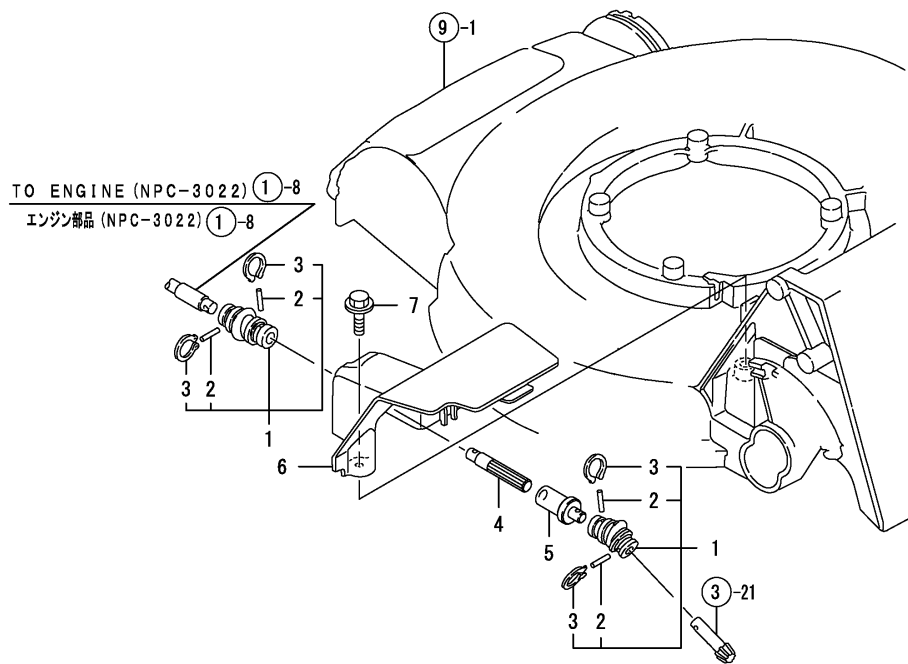
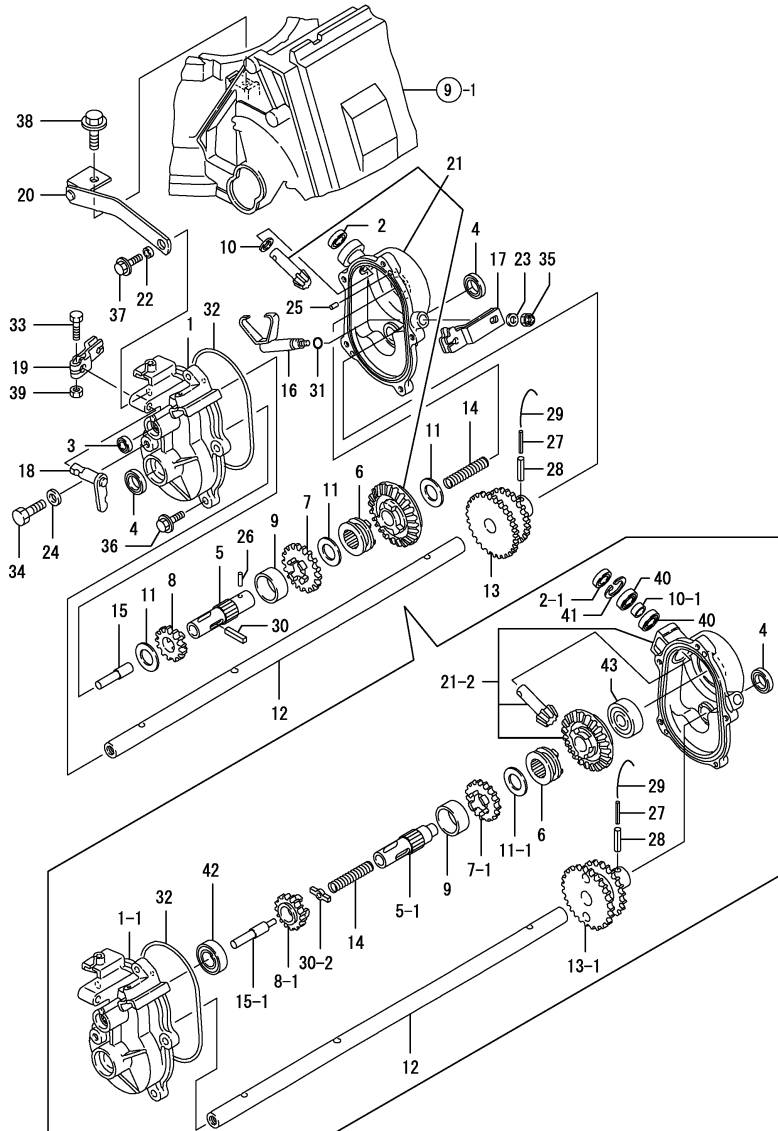


Fig.3. GEAR CASE

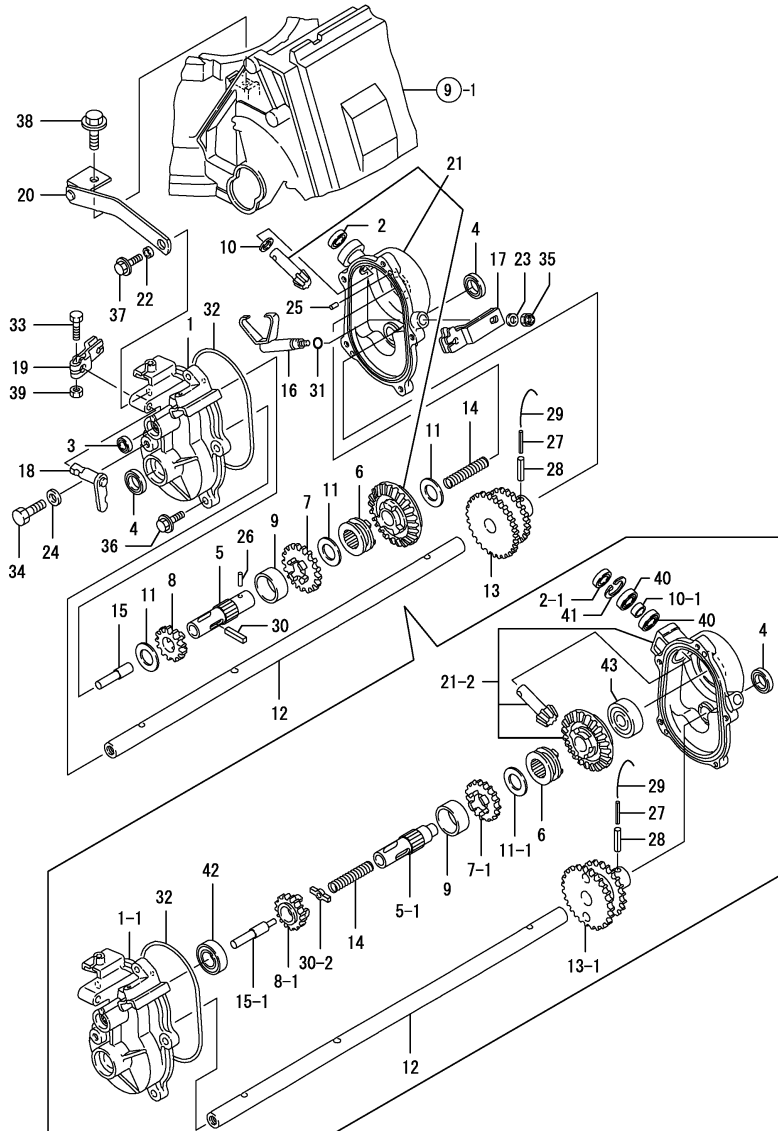


Remarks
 (1) REF. NO.30 PART IS PLATED
 REF. NO.30-1 PART IS NOT PLATED
 (2) REF. NO.1-1 PART HAS REF.NO.42
 BEARING MOUNTING HOLE
 (3) TOOTH NUMBER=REF.NO.7,31
 TOOTH;REF.NO.7-1,27 TOOTH

(A)=YL630T (D)=YL630TSC
 (B)=YL630TS (E)=
 (C)=YL630T-R (F)=

REF.	LEV.	PARTS NO.	DESCRIPTION	QTY						I	R
				(A)	(B)	(C)	(D)	(E)	(F)		
1	1	1E1061-25011	CASE, GEAR	1	1	1					
I 1-1	1	1E1061-25012	CASE, GEAR	1	1	1	1				S 2
		(A=F100291) (B=F100968) (C=F100191)									
2	1	1E1061-25050	SEAL TC10205,OIL	1	1	1					
I 2-1	1	1E1061-25051	OIL SEAL TC10225	1	1	1	1				S
		(A=F100291) (B=F100968) (C=F100191)									
3	1	1E1061-25060	SEAL TC8165,OIL	1	1	1	1				
4	1	1E1061-25070	SEAL TC15255,OIL	2	2	2	2				
5	1	1E1061-25110	SHAFT,CLUTCH	1	1	1					
I 5-1	1	1E1061-25111	SHAFT,CLUTCH	1	1	1	1				S
		(A=F100291) (B=F100968) (C=F100191)									
6	1	1E1060-25140	CLUTCH,AXLE	1	1	1	1				
7	1	1E1061-25140	GEAR 31	1	1	1					
I 7-1	1	1E1061-25141	GEAR 27	1	1	1					S 3
		(A=F100291) (B=F100968) (C=F100191)									
I 7-2	1	1E1061-25142	GEAR 27	1	1	1					N
		(A=FXXXXXXX) (B=F101323) (C=F102942)									
I 7-3	1	1E1061-25610	GEAR 29	1	1	1	1				S
		(A=FXXXXXXX) (B=F103784) (C=F102957)									
8	1	1E1061-25150	GEAR 21	1	1	1					
I 8-1	1	1E1061-25151	GEAR 21	1	1	1					S
		(A=F100291) (B=F100968) (C=F100191)									
I 8-2	1	1E1061-25620	GEAR 22	1	1	1	1				S
		(A=FXXXXXXX) (B=F103784) (C=F102957)									
9	1	1E1061-25160	COLLAR 26X32X14	1	1	1	1				
10	1	1E1061-25170	LINER 10X16X1	1	1	1					
I 10-1	1	1E1061-25171	SPACER 10X13.8X6	1	1	1	1				S
		(A=F100291) (B=F100968) (C=F100191)									
11	1	1E1061-25180	LINER 17301	3	3	3					
I 11-1	1	1E1061-25180	LINER 17301	1	1	1	1				K
		(A=F100291) (B=F100968) (C=F100191)									
12	1	1E1071-25200	SHAFT 53,DRIVE	1	1	1	1				
13	1	1E1061-25210	GEAR 45-36 COMPL.	1	1	1					
I 13-1	1	1E1061-25211	GEAR 45-39	1	1	1					S
		(A=F100291) (B=F100968) (C=F100191)									
I 13-2	1	1E1061-25212	GEAR 45-39	1	1	1					N
		(A=FXXXXXXX) (B=F101323) (C=F102942)									
I 13-3	1	1E1061-25630	GEAR 44-37	1	1	1	1				S
		(A=FXXXXXXX) (B=F103784) (C=F102957)									
14	1	1E1061-25250	SPRING 10.7X53	1	1	1	1				
15	1	1E1061-25270	PIN,CHANGE	1	1	1					
I 15-1	1	1E1061-25271	PIN,CHANGE	1	1	1	1				S
		(A=F100291) (B=F100968) (C=F100191)									
16	1	1E1061-25300	CLUTCH FORK	1	1	1	1				
17	1	1E1061-25330	LEVER 45H,TIP	1	1	1	1				
18	1	1E1061-25370	LINK,CHANGE	1	1	1	1				
19	1	1E1061-25410	LEVER 30,TIP	1	1	1	1				
20	1	1E1061-25430	LINK,CASE SUPPORT	1	1	1					
I 20-1	1	1E1061-25431	LINK,CASE SUPPORT	1	1	1	1				R
		(A=FXXXXXXX) (B=F103706) (C=F102952)									
21	1	1E1061-25500	BEVEL CASE CMP.	1	1	1					

Fig.3. GEAR CASE



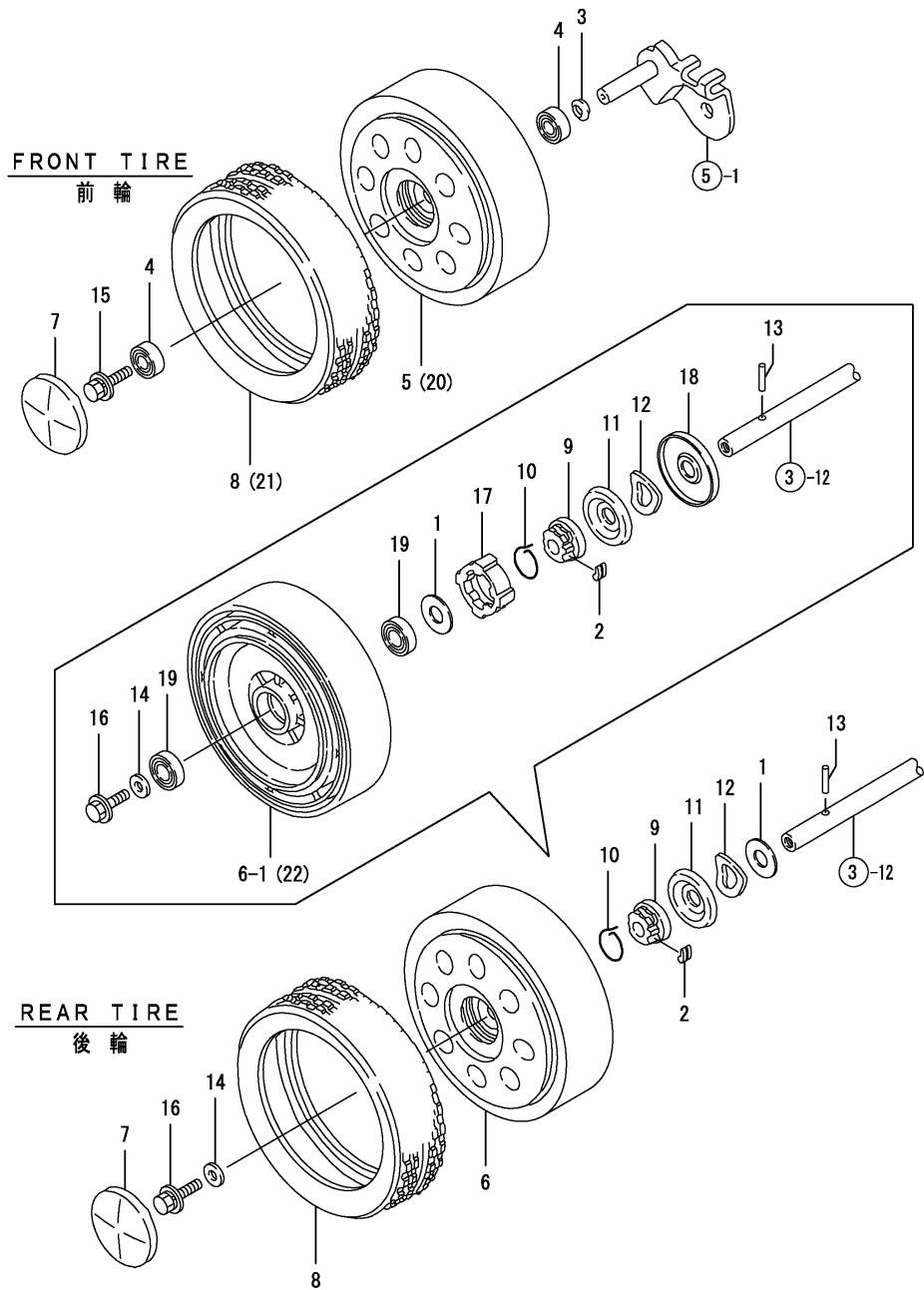
Remarks
 (1) REF. NO.30 PART IS PLATED
 REF. NO.30-1 PART IS NOT PLATED
 (2) REF. NO.1-1 PART HAS REF.NO.42
 BEARING MOUNTING HOLE
 (3) TOOTH NUMBER=REF.NO.7,31
 TOOTH;REF.NO.7-1,27 TOOTH

OCNP2-G99200 3. GEAR CASE

(A)=YL630T (D)=YL630TSC
 (B)=YL630TS (E)=
 (C)=YL630T-R (F)=

REF.	LEV.	PARTS NO.	DESCRIPTION	QTY						I	R
				(A)	(B)	(C)	(D)	(E)	(F)		
I	21-1	1 1E1061-25501 (A=FXXXXXX) (B=F100328) (C=F100021)	BEVEL CASE CMP. (C=F100021)	1	1	1					N
I	21-2	1 1E1061-25502 (A=F100291) (B=F100968) (C=F100191)	CASE,BEVEL GEAR,ASY (C=F100191)	1	1	1	1				S
	22	1 1E6910-39640	COLLAR 6.5X10.5X5	1	1	1	1				
	23	1 22137-060000	WASHER 6, POLISHED	1	1	1	1				
	24	1 22190-080000	SEAL WASHER 8(BOLT)	1	1	1	1				
	25	1 22312-040080	PIN 4X8,STRAIGHT	2	2	2	2				
I	26	1 22312-040140 (A=F100291) (B=F100968) (C=F100191)	PARALLEL PIN 4X14 (C=F100191)	1	1	1					Z
	27	1 22351-035025	SPRING PIN 3.5X25	1	1	1	1				
	28	1 22351-060025	SPRING PIN 6X25	1	1	1	1				
	29	1 22451-100160	WIRE 1.0X160,BINDING	1	1	1	1				
	30	1 22551-050250	KEY 5X25	1	1						
	30-1	1 1E1061-25490 (A=F100291) (B=F100251) (C=F100191)	KEY 5X5X25 (C=F100191)	1	1	1					S 1
I	30-2	1 1E1061-25491 (A=F100291) (B=F100968) (C=F100191)	TINE CLUTCH (C=F100191)	1	1	1	1				S
	31	1 24311-000070	O-RING 1A P-7.0	1	1	1	1				
	32	1 24321-001100	O-RING 1A G-110.0	1	1	1	1				
	33	1 26117-060202	BOLT M 6X 20	1	1	1					
I	33-1	1 26116-060202 (A=FXXXXXX) (B=F103706) (C=F102952)	BOLT M 6X 20 (C=F102952)	1	1	1	1				R
	34	1 26117-080122	BOLT M 8X 12 PLATED	1	1	1					
I	34-1	1 26116-080122 (A=FXXXXXX) (B=F103706) (C=F102952)	BOLT M 8X 12 PLATED (C=F102952)	1	1	1	1				R
	35	1 26347-060002	U-NUT M 6	1	1	1	1				
	36	1 26476-060202	BOLT M 6X 20,TAPPING	4	4	4	4				
	37	1 26476-060302	BOLT M 6X 30,TAPPING	1	1	1	1				
	38	1 26476-080162	BOLT M 8X 16,TAPPING	1	1	1	1				
	39	1 26717-060002	NUT M 6	1	1	1	1				
I	40	1 1E1061-25481 (A=F100291) (B=F100968) (C=F100191)	BEARING 6900 (C=F100191)	2	2	2	2				W
I	41	1 22252-000220 (A=F100291) (B=F100968) (C=F100191)	CIRCLIP 22 (C=F100191)	1	1	1	1				W
I	42	1 24101-060034 (A=F100291) (B=F100968) (C=F100191)	BALL BEARING (C=F100191)	1	1	1	1				W
I	43	1 24101-063014 (A=F100291) (B=F100968) (C=F100191)	BALL BEARING (C=F100191)	1	1	1	1				W

Fig.4. WHEEL



(A)=YL630T
(B)=YL630TS
(C)=YL630T-R

(D)=YL630TSC
(E)=
(F)=

REF.	LEV.	PARTS NO.	DESCRIPTION	QTY						I	R
				(A)	(B)	(C)	(D)	(E)	(F)		
1	1	1E4110-24010	LINER 15	2	2	2	2				
2	1	1E1060-25420	PAWL,CLUTCH	4	4	4	4				
3	1	1E1060-31100	SPRING 12.7X23,LOCK	2	2	2	2				
4	1	1E1060-31450	SHAFT HOLDER	4	4	4	4				
5	1	1E1071-31500	WHEEL,FRONT	2	2						
5-1	1	1E1071-31570	WHEEL,FRONT	2	2	2					N
		(A=F100181) (B=F100251)									
6	1	1E1071-31510	WHEEL,REAR	2	2						
6-1	1	1E1071-31580	WHEEL,REAR	2	2	2					N
		(A=F100181) (B=F100251)									
7	1	1E1061-31530	CAP,WHEEL	4	4		2				Z
		(A=F100181) (B=F100251)									
8	1	1E1061-31550	TIRE	4	4						
8-1	1	1E1071-31600	TIRE,PRO	4	4	4	2				N
		(A=F100181) (B=F100251)									
9	1	1E1061-31650	CLUTCH	2	2	2	2				
10	1	1E1061-31671	SPRING 26,RING	2	2	2	2				
11	1	1E1061-31681	COVER,CLUTCH	2	2	2	2				
12	1	1E1061-31690	PLATE,COVER KEEP	2	2	2	2				
13	1	1E1061-31750	PIN 5X25,STRAIGHT	2	2	2	2				
14	1	22157-080000	WASHER 8	2	2	2	2				
15	1	26018-080164	BOLT M 8X 16	2	2	2					
I 15-1	1	26014-080162	BOLT M 8X 16	2	2	2	2				R
		(A=FXXXXXXX) (B=F103706) (C=F102952)									
16	1	26107-080122	BOLT M 8X 12 PLATED	2	2	2					
I 16-1	1	26107-080162	BOLT M 8X 16 PLATED	2	2	2					N
		(A=FXXXXXXX) (B=F100328) (C=F100021)									
I 16-2	1	26106-080162	BOLT M 8X 16 PLATED	2	2	2	2				R
		(A=FXXXXXXX) (B=F103706) (C=F102952)									
17	1	1E1061-31660	HOUSING,CLUTCH	2	2	2					W
		(A=F100181) (B=F100251)									
I 17-1	1	1E1061-31661	HOUSING, CLUTCH	2	2	2	2				N
		(A=FXXXXXXX) (B=F103706) (C=F102952)									
18	1	1E1071-31700	COVER,CLUTCH EXTRNL.	2	2	2	2				W
		(A=F100181) (B=F100251)									
19	1	24104-060024	BALL BEARING 6002UU	4	4	4	4				W
		(A=F100181) (B=F100251)									
I 20	1	1E1061-31500	WHEEL F								2
I 21	1	1E1061-31550	TIRE								2
I 22	1	1E1071-31580-1	WHEEL,REAR								2

Fig.6. BLADE, FAN & CATCHER

0CNP2-G99200 6. BLADE, FAN & CATCHER

(A)=YL630T
(B)=YL630TS
(C)=YL630T-R

(D)=YL630TSC
(E)=
(F)=

REF.	LEV.	PARTS NO.	DESCRIPTION	Q'TY						I	R
				(A)	(B)	(C)	(D)	(E)	(F)		
1	1	1E1071-41100	BLADE 53	1	1	1	1				
2	1	1E1060-41120	GUIDE,BLEDE	1	1	1	1				
3	1	26138-100202	BOLT 10X20,COLLAR HD	2	2	2					
I	3-1	1E1061-41130 (A=FXXXXXX) (B=F103706) (C=F102952)	BOLT M10X 20	2	2	2	2				R
	4	1E1060-42050	FAN,BLADE	1	1	1	1				
	5	26016-060122	BOLT M 6X 12	4	4	4					
I	5-1	26013-060122 (A=FXXXXXX) (B=F103706) (C=F102952)	BOLT M 6X 12	4	4	4	4				R
	6	1E1071-43011	FRAME 53,CATCHER	1	1	1	1				
	7	1E1071-43100	CATCHER 53	1	1	1	1				
	8	1E1061-43200	PIPE 8 10 35	2	2	2	2				

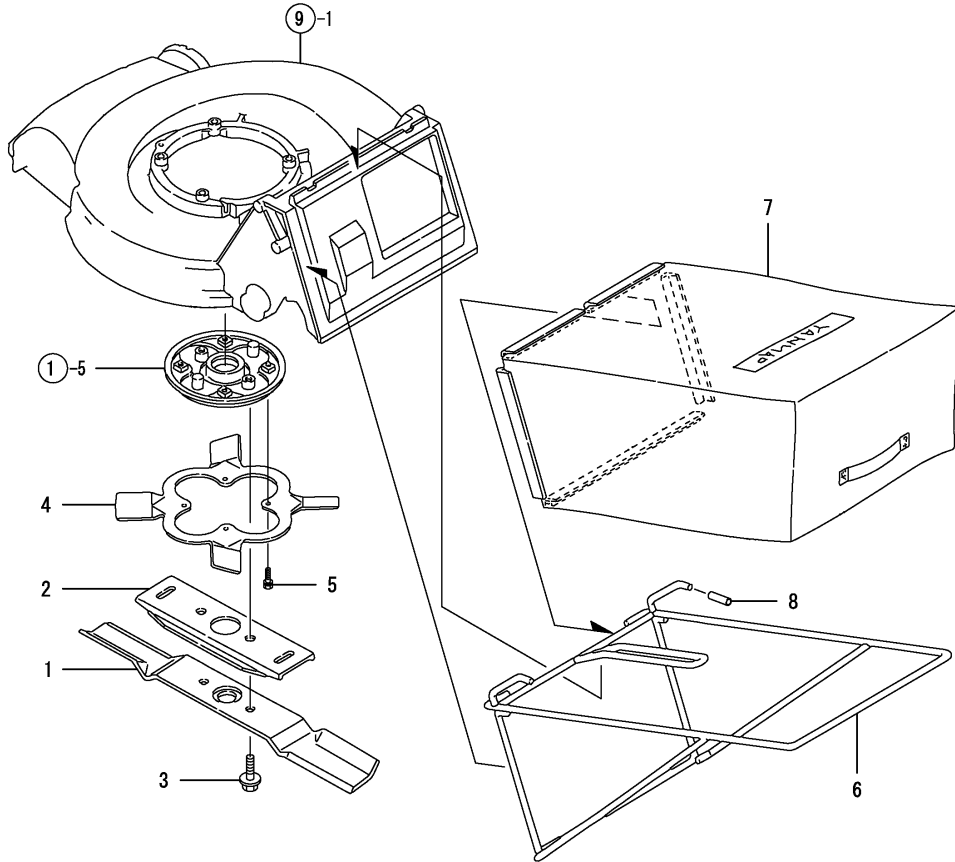
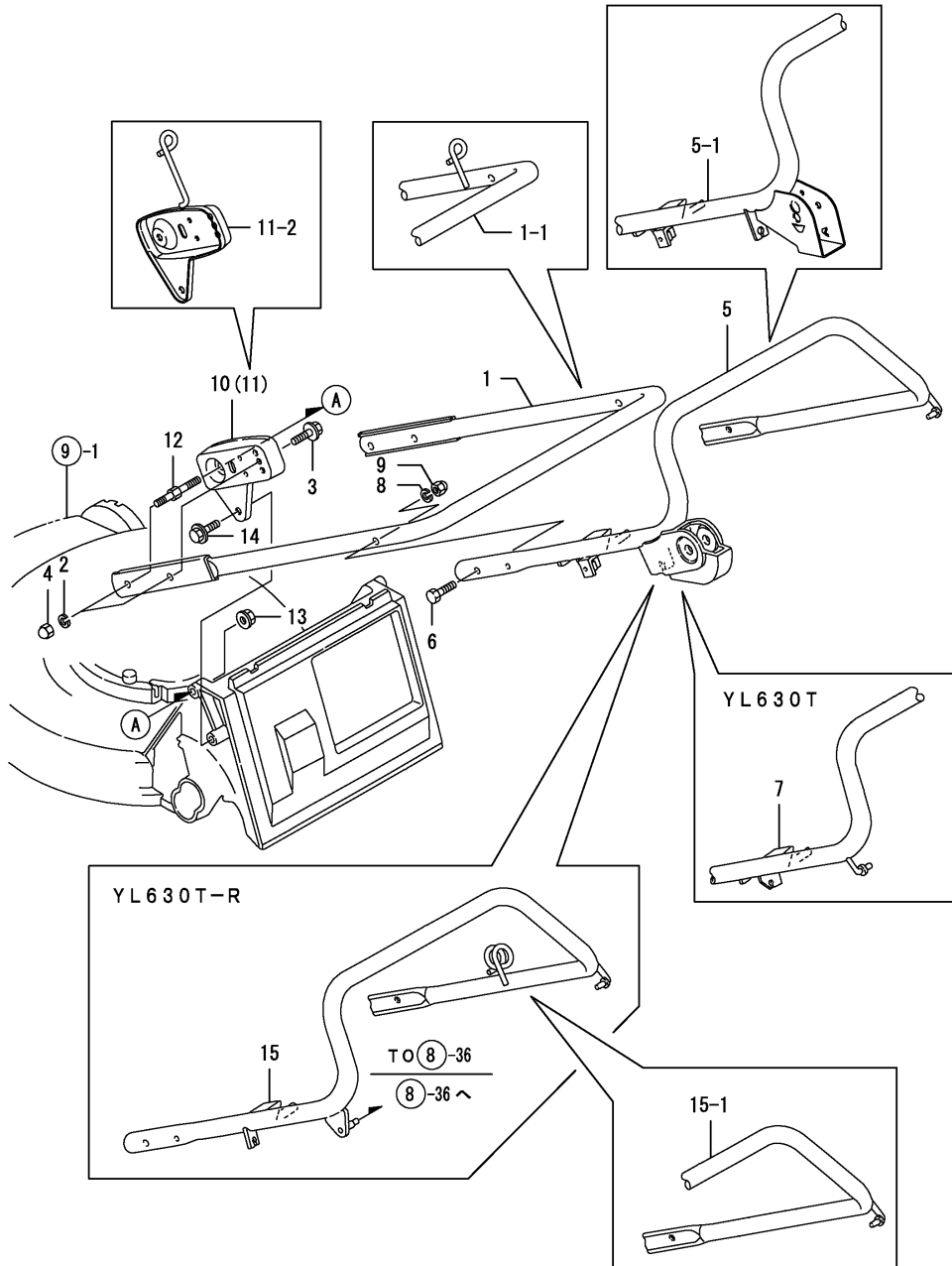


Fig.7. HANDLE

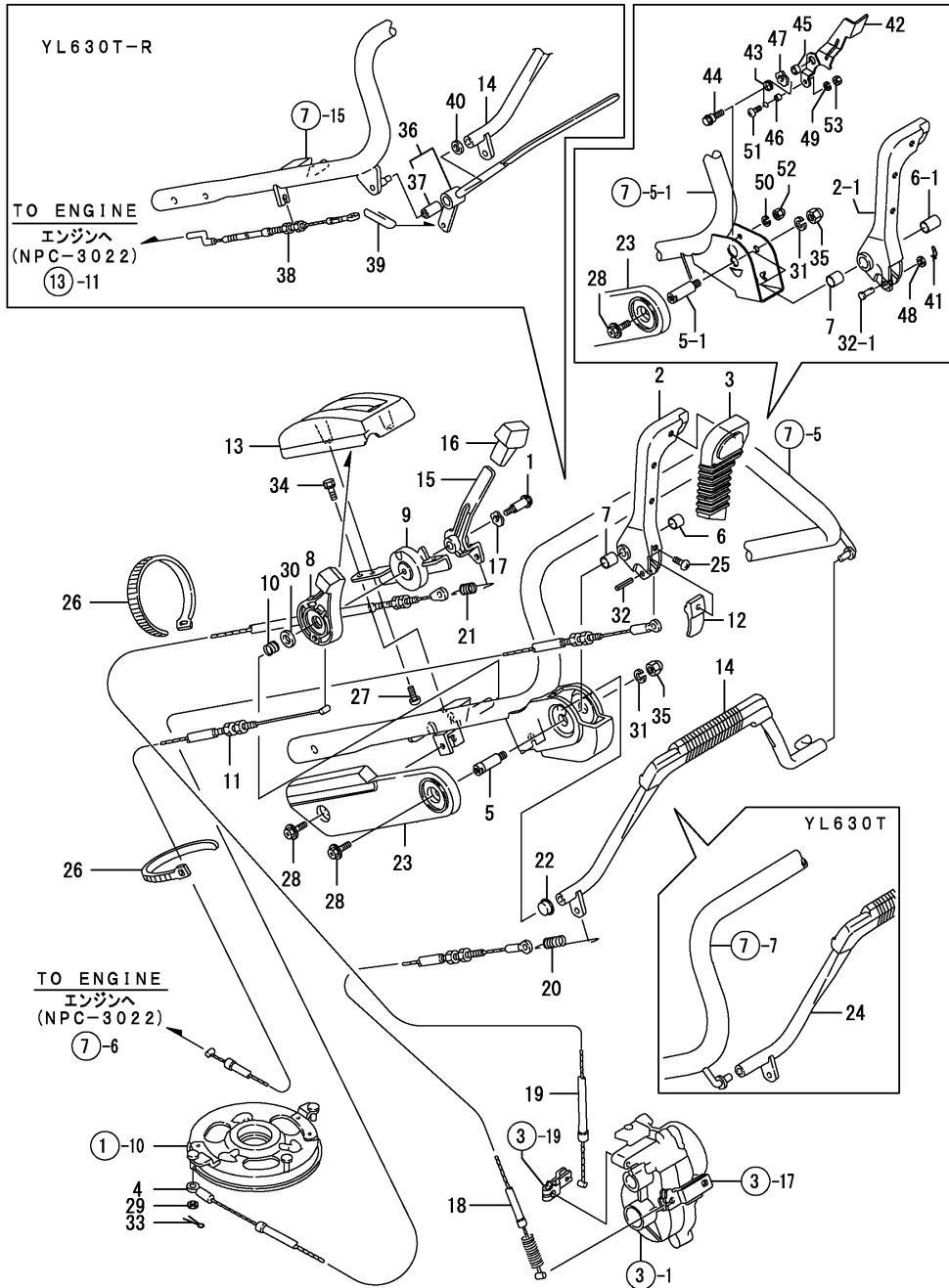
(A)=YL630T
(B)=YL630TS
(C)=YL630T-R

(D)=YL630TSC
(E)=
(F)=



REF.	LEV.	PARTS NO.	DESCRIPTION	Q'TY						I	R
				(A)	(B)	(C)	(D)	(E)	(F)		
1	1	1E1071-50010	HANDLE COMP.,MAIN	1	1	1					
I 1-1	1	1E1071-50011	HANDLE COMP.,MAIN	1	1	1	1				S
		(A=SEE ILLST)	(B=F103784)	(C=F102957)							
2	1	22217-080000	SPRING WASHER 8	4	4	4	4				
3	1	26107-080302	BOLT M 8X 30 PLATED	2	2	2					
I 3-1	1	26106-080302	BOLT M 8X 30 PLATED	2	2	2	2				R
		(A=FXXXXXX)	(B=F103706)	(C=F102952)							
4	1	26668-080002	CAP NUT M 8	4	4	4	4				
5	1	1E1061-51011	HANDLE TS COMPL.		1						
I 5-1	1	1E1061-51012	HANDLE TS COMPL.		1		1				S
		(B=F103784)									
6	1	1E1061-51110	BOLT 8X40,FLAT HEAD	2	2	2	2				
7	1	1E1061-51700	HANDLE TD COMPL.	1							
8	1	22217-080000	SPRING WASHER 8	2	2	2	2				
9	1	26668-080002	CAP NUT M 8	2	2	2	2				
10	1	1E1061-56010	STAY (L), HANDLE	1	1	1					
I 10-1	1	1E1061-56020	STAY(LZ), HANDLE	1	1	1	1				Q
		(A=F100291)	(B=F100968)	(C=F100191)							
11	1	1E1061-56050	STAY (R), HANDLE	1	1	1					
I 11-1	1	1E1061-56060	STAY(RZ), HANDLE	1	1	1					Q
		(A=F100291)	(B=F100968)	(C=F100191)							
I 11-2	1	1E1061-56051	STAY R,HANDLE	1	1	1	1				S
		(A=SEE ILLST)	(B=F103784)	(C=F102957)							
12	1	1E1071-56200	BOLT M8X36,STAY	2	2	2	2				
13	1	26367-080002	U-NUT M 8	2	2	2	2				
14	1	26476-080162	BOLT M 8X 16,TAPPING	2	2	2	2				
15	1	1E1061-51710	HANDLE COMP.,TR			1					
I 15-1	1	1E1061-51711	HANDLE COMP.,TR			1					S
		(C=F102957)									

Fig.8. LEVER WIRE

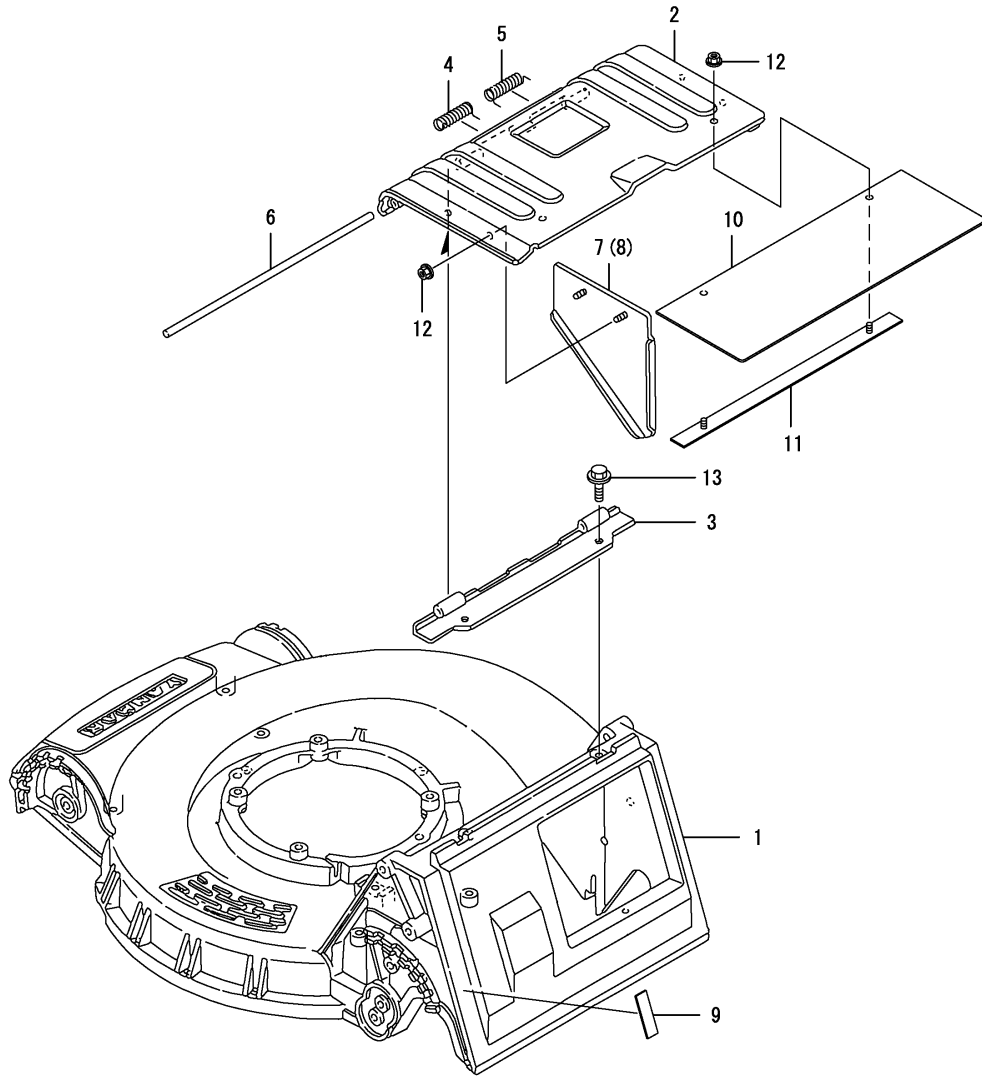


(A)=YL630T
(B)=YL630TS
(C)=YL630T-R
(D)=YL630TSC
(E)=
(F)=

REF.	LEV.	PARTS NO.	DESCRIPTION	QTY						I	R
				(A)	(B)	(C)	(D)	(E)	(F)		
1	1	1E1060-12350	BOLT 6X12, STEPPED	1	1	1	1				
2	1	1E1061-57011	LEVER, BLADE CLUTCH		1						
I 2-1	1	1E1061-57012	LEVER, BLADE CLUTCH		1		1				S
(B=F103784)											
3	1	1E1061-57040	GRIP, BLADE CLUTCH		1		1				
4	1	1E1061-57050	WIRE, BLADE CLUTCH		1						
I 4-1	1	1E1061-57051	WIRE, BLADE CLUTCH		1		1				N
(B=F100968)											
5	1	1E1061-57061	PIN, LEVER FULCRUM		1						
I 5-1	1	1E1061-57062	PIN, LEVER FULCRUM		1		1				S
(B=F103784)											
6	1	1E1061-57080	METAL 12X12		1						
I 6-1	1	1S6530-61730	80B, 1220		1		1				S
(B=F103784)											
7	1	1E1061-57090	METAL 12X15		1		1				
8	1	1E1061-57110	LEVER ASSY, ACCEL.	1	1						
8-1	1	1E1061-57111	LEVER, THROTTLE	1	1	1	1				N
(A=F100181) (B=F100251)											
9	1	1E1061-57130	COVER, ACCELERATOR	1	1	1	1				
10	1	1E1061-57141	COIL SPRING 13	1	1	1	1				
11	1	1E1061-57150	WIRE, ACCELERATOR	1	1	1					
I 11-1	1	1E1061-57151	WIRE, ACCELERATOR	1	1	1	1				N
(A=F100291) (B=F100968) (C=F100191)											
I 12	1	1E1060-57200	PLATE, LEVER CONTACT		1						Z
(B=F103784)											
13	1	1E1061-57300	COVER, LATCH	1	1	1	1				
14	1	1E1061-57501	T.CLUTCH LEVER CMP.		1	1	1				
15	1	1E1061-57560	LEVER, CHANGE	1	1	1	1				
16	1	1E1061-57600	GRIP, CHANGE LEVER	1	1	1	1				
17	1	1E1061-57640	WASHER 10, PLAIN	1	1	1	1				
18	1	1E1061-57650	WIRE, TRAVEL CLUTCH	1	1	1					
I 18-1	1	1E1061-57651	WIRE, TRAVEL CLUTCH	1	1	1	1				N
(A=F100291) (B=F100968) (C=F100191)											
19	1	1E1061-57700	WIRE, CHANGE	1	1	1					
I 19-1	1	1E1061-57701	WIRE, CHANGE	1	1	1	1				N
(A=F100291) (B=F100968) (C=F100191)											
20	1	1E1061-57730	SPRING 112, TENSION	1	1	1	1				
21	1	1E1061-57740	SPRING 66, VENSION	1	1	1	1				
22	1	1E1061-57750	METAL, TRV. CLTCH. LVR.		1		1				
23	1	1E1061-57850	COVER, HANDLE SIDE		1		1				
24	1	1E1061-57921	T.CLUTCH LEVER CMP.	1							
I 25	1	1G0010-82850	SCREW 4X12, TAPPING		1						Z
(B=F103784)											
I 26	1	1E6102-84970	BAND 140, WIRE LOCK	2	2	3	2				
27	1	1E6790-95471	SCREW 6X16, TAPPING	2	2	2	2				
28	1	1E4320-99120	BOLT 6X16, CRHM.		2		2				
29	1	22137-060000	WASHER 6, POLISHED		1						
I 29-1	1	1E4030-99230	WASHER 6X16X1		1		1				N
(B=F102942)											
30	1	22137-100000	WASHER 10, POLISHED	1	1	1	1				
31	1	22217-080000	SPRING WASHER 8		1		1				

N:Old $\begin{matrix} \leftarrow \text{Yes} \\ \text{No} \end{matrix}$ New, Q:Old $\begin{matrix} \leftarrow \text{No} \\ \text{Yes} \end{matrix}$ New, R:Old $\begin{matrix} \leftarrow \text{Yes} \\ \text{No} \end{matrix}$ New, S:Old $\begin{matrix} \leftarrow \text{No} \\ \text{Yes} \end{matrix}$ New, W:Add, Z:Discontinued, F:Interchangeable by set, K:Q'ty Change
 ++ CONTINUE ++
 (C)Copy Rights YANMAR CO.,LTD.

Fig.9. CASING & COVER



0CNP2-G99200 9. CASING & COVER

(A)=YL630T
(B)=YL630TS
(C)=YL630T-R

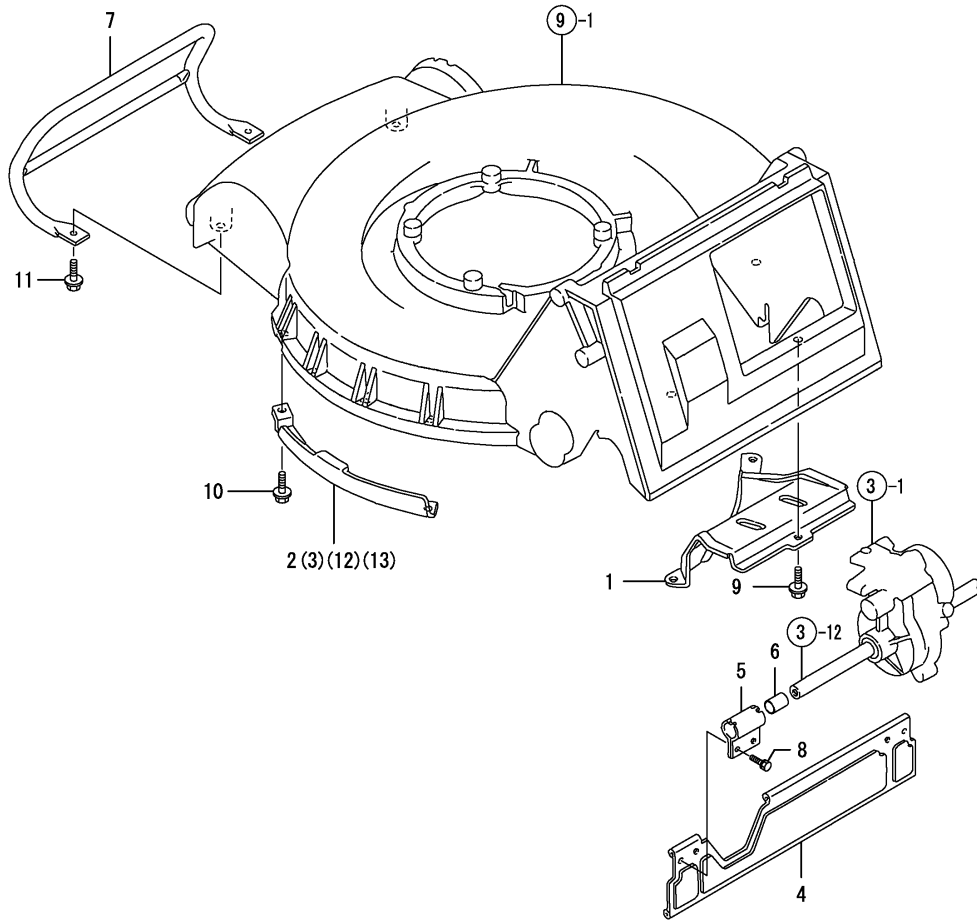
(D)=YL630TSC
(E)=
(F)=

REF.	LEV.	PARTS NO.	DESCRIPTION	QTY						I	R
				(A)	(B)	(C)	(D)	(E)	(F)		
1	1	1E1071-61010	CASING 53, BLADE	1	1	1					
I 1-1	1	1E1071-61011	CORE, BLADE 53	1	1	1	1				R
		(A=FXXXXXX) (B=F104222) (C=F102957)									
2	1	1E1071-61050	COVER 53, CATCHER	1	1	1	1				
3	1	1E1061-61070	SEAT, COVER MOUNTING	1	1	1	1				
4	1	1E1061-61110	SPRING A, COVER RETRN	1	1	1	1				
5	1	1E1061-61120	SPRING B, COVER RETRN	1	1	1	1				
6	1	1E1061-61130	PIN 8X310	1	1	1	1				
I 7	1	1E1061-61201	CATCHER COVER STAY L	1	1	1					Z
		(A=F100291) (B=F100968) (C=F100191)									
I 8	1	1E1061-61251	CATCHER COVER STAY R	1	1	1					Z
		(A=F100291) (B=F100968) (C=F100191)									
I 9	1	1E1061-61300	PROTECTION RUBBER A	2	2	2					Z
		(A=F100291) (B=F100968) (C=F100191)									
I 10	1	1E1071-61310	RUBBER 530, SCTTR. CHK	1	1	1					Z
		(A=F100291) (B=F100968) (C=F100191)									
I 11	1	1E1061-61320	WASHER, RETAINER	1	1	1					Z
		(A=F100291) (B=F100968) (C=F100191)									
I 12	1	26367-060002	NUT M 6	6	6	6					Z
		(A=F100291) (B=F100968) (C=F100191)									
13	1	26476-080162	BOLT M 8X 16, TAPPING	2	2	2	2				

Fig.10. SCRAPER & GUARD

(A)=YL630T
(B)=YL630TS
(C)=YL630T-R

(D)=YL630TSC
(E)=
(F)=

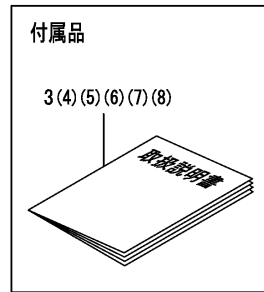
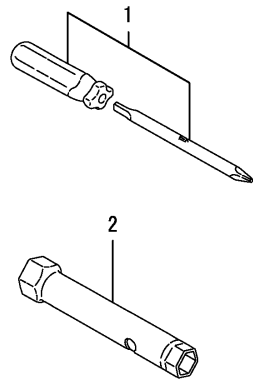


REF.	LEV.	PARTS NO.	DESCRIPTION	Q'TY						I	R
				(A)	(B)	(C)	(D)	(E)	(F)		
1	1	1E1071-63010	GUIDE 53, GLASS	1	1	1	1				
2	1	1E1071-63051	GUIDE 53L, GLASS FRNT	1	1	1					
3	1	1E1071-63060	GUIDE 53R, GLASS FRNT	1	1	1					
4	1	1E1071-63100	GUARD 53, STONE	1	1	1	1				
5	1	1E1061-63130	HANGER, STONE GUARD	2	2	2	2				
6	1	1E1061-63140	BUSH 16X18X25	2	2	2	2				
7	1	1E1071-65090	GUARD, FRONT	1	1	1					
8	1	26016-060124	BOLT 6X12 W/L.W.	4	4	4					
I 8-1	1	26013-060122	BOLT M 6X 12	4	4	4	4				R
		(A=FXXXXXX) (B=F103706) (C=F102952)									
9	1	26476-080162	BOLT M 8X 16, TAPPING	3	3	3	3				
10	1	26476-080162	BOLT M 8X 16, TAPPING	4	4	4	4				
11	1	26476-080162	BOLT M 8X 16, TAPPING	2	2	2					
I 12	1	1E1071-63051-1	GUIDE 53L, GLASS FRNT								1
I 13	1	1E1071-63060-1	GUIDE 53R, GLASS FRNT								1

Fig.12. TOOLS

(A)=YL630T
(B)=YL630TS
(C)=YL630T-R

(D)=YL630TSC
(E)=
(F)=



REF.	LEV.	PARTS NO.	DESCRIPTION	Q'TY						I	R
				(A)	(B)	(C)	(D)	(E)	(F)		
1	1	1C6052-88060	SCREWDRIVER,COMBINAT	1	1	1	1				
2	1	1E4150-99260	BOX WRENCH 13X21	1	1	1	1				
3	1	1E1071-88051	MANUAL,LWN.MOWER OP.	1	1	1					
I	3-1	1 1E1071-88052 (A=F100291) (B=F100968) (C=F100191)	MANUAL, LWN.MOWER OP	1	1	1					S
I	3-2	1 1E1071-88053 (A=FXXXXXXX) (B=F103784) (C=F102957)	MANUAL, LWN.MOWER OP	1	1	1					S
I	3-3	1 1E1071-88053 (A=FXXXXXXX) (B=F103784) (C=F102957)	MANUAL, LWN.MOWER OP	1	1	1					Z
I	4	1 1E1061-88350 (A=FXXXXXXX) (B=F103784) (C=F102957)	MANUAL, ENGLISH	1	1	1					W
I	4-1	1 1E1071-88350 (A=FXXXXXXX) (B=F105756) (C=FXXXXXXX)	MANUAL, LWN.MOWER OP	1	1	1	1				S
I	5	1 1E1061-88360 (A=FXXXXXXX) (B=F103784) (C=F102957)	MANUAL, FRENCH	1	1	1					W
I	5-1	1 1E1061-88360 (A=FXXXXXXX) (B=F103784) (C=F102957)	MANUAL, FRENCH	1	1	1					Z
I	6	1 1E1061-88370 (A=FXXXXXXX) (B=F103784) (C=F102957)	MANUAL, GERMAN	1	1	1					W
I	6-1	1 1E1061-88370 (A=FXXXXXXX) (B=F103784) (C=F102957)	MANUAL, GERMAN	1	1	1					Z
I	7	1 1E1061-88380 (A=FXXXXXXX) (B=F103784) (C=F102957)	MANUAL, ITALIAN	1	1	1					W
I	7-1	1 1E1061-88380 (A=FXXXXXXX) (B=F103784) (C=F102957)	MANUAL, ITALIAN	1	1	1					Z
I	8	1 1E1061-88390 (A=FXXXXXXX) (B=F103784) (C=F102957)	MANUAL, SPAIN	1	1	1					W
I	8-1	1 1E1061-88390 (A=FXXXXXXX) (B=F103784) (C=F102957)	MANUAL, SPAIN	1	1	1					Z

Part Number Index

All parts are stipulated in the order of part numbers.

(Depending on the area in which the part is used.)

This index will display the location of the part according to each part number.

PARTS No. INDEX

PARTS No.	Fig.	Ref.No.
1A1040-46460	1	19
1C6052-88060	12	1
1C6281-52310	8	41
1E1060-12011	1	5
1E1060-12100	1	6
1E1060-12340	1	14
1E1060-12350	8	1
1E1060-12970	1	17
1E1060-12990	1	18
1E1060-25140	3	6
1E1060-25420	4	2
1E1060-31100	4	3
1E1060-31450	4	4
1E1060-41120	6	2
1E1060-42050	6	4
1E1060-57200	8	12
1E1061-11100	1	1
1E1061-12150	1	7
1E1061-12170	1	8
1E1061-12220	1	9
1E1061-12251	1	10
1E1061-12310	1	12
1E1061-12360	1	15
1E1061-12650	1	16
1E1061-21010	2	1
1E1061-21030	2	2
1E1061-25011	3	1
1E1061-25012	3	1 -1
1E1061-25050	3	2
1E1061-25051	3	2 -1
1E1061-25060	3	3
1E1061-25070	3	4
1E1061-25110	3	5
1E1061-25111	3	5 -1
1E1061-25140	3	7
1E1061-25141	3	7 -1
1E1061-25142	3	7 -2
1E1061-25150	3	8
1E1061-25151	3	8 -1
1E1061-25160	3	9
1E1061-25170	3	10
1E1061-25171	3	10 -1
1E1061-25180	3	11
		11 -1
1E1061-25210	3	13
1E1061-25211	3	13 -1
1E1061-25212	3	13 -2
1E1061-25250	3	14
1E1061-25270	3	15
1E1061-25271	3	15 -1

PARTS No.	Fig.	Ref.No.
1E1061-25300	3	16
1E1061-25330	3	17
1E1061-25370	3	18
1E1061-25410	3	19
1E1061-25430	3	20
1E1061-25431	3	20 -1
1E1061-25481	3	40
1E1061-25490	3	30 -1
1E1061-25491	3	30 -2
1E1061-25500	3	21
1E1061-25501	3	21 -1
1E1061-25502	3	21 -2
1E1061-25610	3	7 -3
1E1061-25620	3	8 -2
1E1061-25630	3	13 -3
1E1061-31500	4	20
1E1061-31530	4	7
1E1061-31550	4	8
		21
1E1061-31650	4	9
1E1061-31660	4	17
1E1061-31661	4	17 -1
1E1061-31671	4	10
1E1061-31681	4	11
1E1061-31690	4	12
1E1061-31750	4	13
1E1061-35010	5	1
1E1061-35050	5	2
1E1061-35200	5	3
1E1061-35210	5	4
1E1061-35250	5	5
1E1061-35350	5	6
1E1061-35510	5	7
1E1061-35550	5	8
1E1061-41130	6	3 -1
1E1061-43200	6	8
1E1061-51011	7	5
1E1061-51012	7	5 -1
1E1061-51110	7	6
1E1061-51700	7	7
1E1061-51710	7	15
1E1061-51711	7	15 -1
1E1061-56010	7	10
1E1061-56020	7	10 -1
1E1061-56050	7	11
1E1061-56051	7	11 -2
1E1061-56060	7	11 -1
1E1061-57011	8	2
1E1061-57012	8	2 -1
1E1061-57040	8	3

PARTS No.	Fig.	Ref.No.
1E1061-57050	8	4
1E1061-57051	8	4 -1
1E1061-57061	8	5
1E1061-57062	8	5 -1
1E1061-57080	8	6
1E1061-57090	8	7
1E1061-57110	8	8
1E1061-57111	8	8 -1
1E1061-57130	8	9
1E1061-57141	8	10
1E1061-57150	8	11
1E1061-57151	8	11 -1
1E1061-57200	8	36
1E1061-57280	8	39
1E1061-57300	8	13
1E1061-57350	8	42
1E1061-57360	8	43
1E1061-57370	8	44
1E1061-57380	8	45
1E1061-57390	8	46
1E1061-57501	8	14
1E1061-57560	8	15
1E1061-57600	8	16
1E1061-57640	8	17
		47
1E1061-57650	8	18
1E1061-57651	8	18 -1
1E1061-57700	8	19
1E1061-57701	8	19 -1
1E1061-57730	8	20
1E1061-57740	8	21
1E1061-57750	8	22
1E1061-57850	8	23
1E1061-57921	8	24
1E1061-61070	9	3
1E1061-61110	9	4
1E1061-61120	9	5
1E1061-61130	9	6
1E1061-61201	9	7
1E1061-61251	9	8
1E1061-61300	9	9
1E1061-61320	9	11
1E1061-63130	10	5
1E1061-63140	10	6
1E1061-86100	11	3
1E1061-86110	11	5
1E1061-86121	11	6
1E1061-86150	11	7
1E1061-86160	11	8
1E1061-86171	11	9

PARTS No.	Fig.	Ref.No.
1E1061-86180	11	10
1E1061-86190	11	14
1E1061-86200	11	11
1E1061-86220	11	12
1E1061-86230	11	17
1E1061-86240	11	18
1E1061-86600	11	15
1E1061-86610	11	16
1E1061-88350	12	4
1E1061-88360	12	5
		5 -1
1E1061-88370	12	6
		6 -1
1E1061-88380	12	7
		7 -1
1E1061-88390	12	8
		8 -1
1E1070-86910	11	13
1E1071-12300	1	11
1E1071-12320	1	13
1E1071-12321	1	13 -1
1E1071-12750	1	3
1E1071-21100	2	4
1E1071-21120	2	5
1E1071-21250	2	6
1E1071-25200	3	12
1E1071-31500	4	5
1E1071-31510	4	6
1E1071-31570	4	5 -1
1E1071-31580	4	6 -1
1E1071-31580-1	4	22
1E1071-31600	4	8 -1
1E1071-31700	4	18
1E1071-41100	6	1
1E1071-43011	6	6
1E1071-43100	6	7
1E1071-50010	7	1
1E1071-50011	7	1 -1
1E1071-56200	7	12
1E1071-57270	8	38
1E1071-57271	8	38 -1
1E1071-61010	9	1
1E1071-61011	9	1 -1
1E1071-61050	9	2
1E1071-61310	9	10
1E1071-63010	10	1
1E1071-63051	10	2
1E1071-63051-1	10	12
1E1071-63060	10	3
1E1071-63060-1	10	13

MODEL : YL630T(S)
PC NO : 0CNP2-G99200

PARTS No. INDEX

PARTS No.	Fig.	Ref.No.
1E1071-63100	10	4
1E1071-65090	10	7
1E1071-86010	11	1
1E1071-86070	11	2
1E1071-86100	11	4
1E1071-86280	11	13 -1
1E1071-88051	12	3
1E1071-88052	12	3 -1
1E1071-88053	12	3 -2
		3 -3
1E1071-88350	12	4 -1
1E4030-99230	1	21 -1
	8	29 -1
1E4110-24010	4	1
1E4150-99260	12	2
1E4320-99120	8	28
1E4480-99150	1	20
1E6102-84970	8	26
1E6790-95471	8	27
1E6910-39640	3	22
1G0010-82850	8	25
1S6530-61730	8	6 -1

PARTS No.	Fig.	Ref.No.
-----------	------	---------

PARTS No.	Fig.	Ref.No.
-----------	------	---------

PARTS No.	Fig.	Ref.No.
-----------	------	---------



YANMAR CO., LTD.